

Memories of CWL

A look at the history of CWL



...and presenting
the graduating class of
2015!

May 13, 2015

A special supplement to

The Leader

& The Kanawha Reporter

The entire middle and high school student body on the last day of school in 2014.

Corwith-Wesley-LuVerne



The Corwith building as it is today.

Congratulations CWL Class of 2015



Join us for Steaks
Broasted Chicken
Prime Rib
Tacos



HandleBar & Restaurant

17 Dewitt St. Downtown LuVerne
515-882-9024 Serving Dinner
Tues-Thurs 5-9, Fri 5-10, Sat 4-10

Congratulations Class of 2015

from Paige Johnson



Certified Crop Advisor trained to help farmers grow more bushels per acre



View her Ag newsletter on line at
<http://pagesagpage.wordpress.com>

Speak to Paige Johnson directly **515-408-6837**
for Seed & Crop Scouting at
Corwith, Iowa

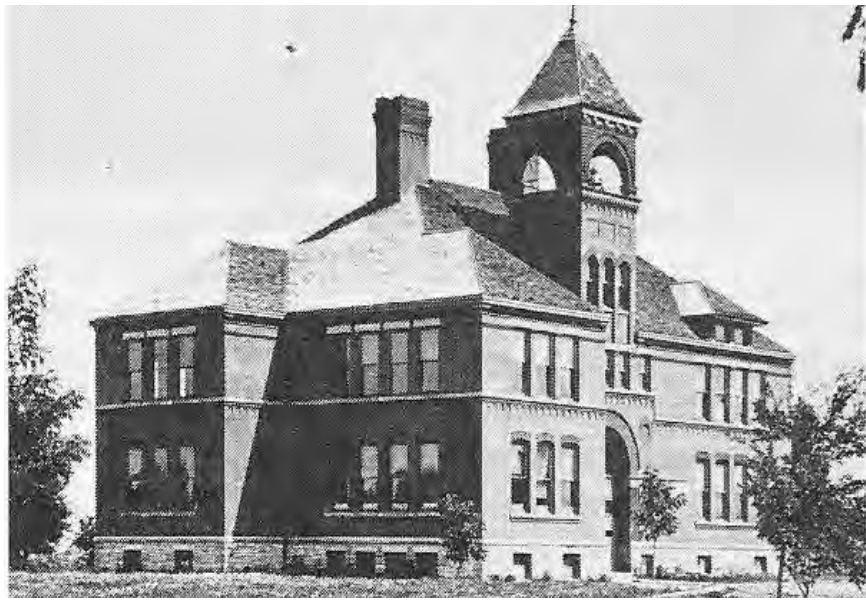
The History of the Corwith School



The earliest of school buses were horse drawn wagons.



The original Corwith schoolhouse. It was later sold to become a Catholic church.



The Independent School, built in 1895 featured eight classrooms.

CORWITH CELEBRATION

MEMORIAL DAY WEEKEND

Friday, May 22 • Saturday, May 23 • Sunday, May 24 • Monday, May 25

FRIDAY, MAY 22

5:00 PM BEER GARDEN { 7-11:00 PM • Free in the park
5:00 PM FOOD VENDORS { "Randy & The Classics" band

SATURDAY, MAY 23

8:00 AM 5K WALK/RUN
11:00 AM PARADE
12:00 PM CAR/TRACTOR SHOW
1-4:00 PM KIDS GAMES IN THE PARK
2:30 PM PEDAL PULL Sponsored by Corwith Red Power
3:00 PM BAG TOURNAMENT
4-7:00 PM SCHOOL OPEN TO VIEW
7:00 PM CORWITH QUEEN/OTHER ENTERTAINMENT
5-7:00 PM DINNER/MEAL High School Commons \$10.00
9:30 PM FIREWORKS

SUNDAY, MAY 24

10:00 AM CHURCH SERVICE IN CWL HIGH SCHOOL
9 - NOON DAD'S BELGIAN WAFFLES IN CWL HS COMMONS
12:30 PM VOLLEYBALL TOURNAMENT

MONDAY, MAY 25

10:30 AM MEMORIAL DAY SERVICE
12:00 PM ALUMNI DINNER - MEAL AT CWL HS

FREE 8-midnight in the park "STANDING HAMPTON" BAND

FACEBOOK PAGE: Corwith - A Town with Heart

Congrats to CWL Class of 2015



Best Wishes to Undergraduates at their new school!

Johnny's

Open: Hours and days 106 E. Main, Wesley
Serving full menu and salad bar
Join us for Broasted Chicken Night Tuesday 515-679-4031

The Early Years



The first basketball team at Corwith High School was coached by Irving Finger.



A Corwith baseball team in the early years.



An early classroom at Corwith High School. Students left to right, front to back included: Helen Larsen, Evelyn Shehan, Eva May, John Ryan, Jean Gleaves, Brice Lithio, Forest Chambers, Wilbur Shipman, Frank Rockwood, Worth Higher, Stella Bosworth, Mildred Rockwood, Robert Galloway, Hazel Bunting, Laura Escher, Earl Ellsworth, Marvel Neeley, Lorraine Ellsworth, Mae Izzard, Hazel Thomas (teacher), and J.L. Lloyd (Superintendent).



Graduation was a formal occasion, as seen by the class of 1901.



The first graders of 1907-08.



Congratulations CWL Class of 2015!

BOB BECKER CONSTRUCTION

and best wishes to the CWL undergraduates as they start their new adventure!

101 E. Main, PO Box 245, Wesley 515-679-4373

Congratulations CWL Class of 2015!



We'll lake deliver and lake test any new boat we sell!

Huge Selection of New & Used Boats & Equipment! Serving North Iowa's Boat needs since 1951.

Al's Marine

almarine@ncn.net 515-679-4432 Certified Technician

2250 Ames Ave. Wesley <http://www.alloebigmarine.com>

History of Schools

By Emilie Jenson

Corwith Schools 1881-1958

The first school building in the newly established village of Corwith was constructed in 1881. The first teacher was Mary Maher. The 12x24 foot schoolhouse was a temporary structure constructed by a stock company, according to town history books. It was rented to the school district until a more suitable structure could be built, and quickly became too small for the school's growing number of pupils.

In 1883 a two story wood structure was built for around \$2,000, and in 1897 an independent school district was formed with the first school board meeting held on June 3, 1887.

The school would once again outgrow its two classrooms, and in 1895, voters approved the construction of a new brick two story school building with eight classrooms for just over \$12,000. The high school was established in the new building in 1895, graduating its first class in 1897.

In 1917 construction of the present brick, three story building was approved, and before the structure was complete the old

wooden building burned to the ground in 1919. The next addition to the building was approved and constructed in 1955 on the west side of the school, which houses several classrooms, a cafeteria and kitchen and the gymnasium. The last class of Corwith Consolidated High School graduated in 1958.

In 1958, Wesley joined Corwith and became the Corwith-Wesley Community School. The first Corwith-Wesley class graduated in 1959.

In 1980, the Corwith-Wesley and LuVerne community school districts would become the first in the state in a whole-grade sharing program, sharing a high school with the first class graduating in 1981.

In 2003, an elementary and middle school whole-grade sharing agreement was entered into with LuVerne, in which all students in kindergarten and first grade attend schools in their respective districts in the Wesley or LuVerne buildings, with second through fourth grade attending classes in Wesley and sixth through eighth grades in Luverne. Following the closure of the Wesley building,

students in seventh and eighth grade also began attending school in Corwith in 2009.

The two districts remain separate to this day, with all pre-kindergarten through sixth grade students attending school in LuVerne and seventh through 12th

grades in Corwith.

As enrollment continued to decline, voters in the Corwith-Wesley decided in October 101 votes to 78 to dissolve the school district effective at the end of the 2014-2015 school year. Effective for the 2015-2016 academic year,

students in the Corwith Wesley district will attend Pre-kindergarten through sixth grade in the LuVerne Schools with junior high and high school students going to nearby Algona Schools though a whole-grade sharing agreement with LuVerne.



The last class to graduate from Corwith Consolidated School was in 1958.



**Celebrating the CWL
Class of 2015!**



Wishing the Undergraduates of CWL a Wonderful Experience in their New School! We're Proud of You!

CENTRAL FINANCIAL GROUP
Klein Insurance Agency of Wesley 515-679-4221
Also Serving Britt 641-843-4483 and Kanawha 641-762-3551

**Congratulations
CWL Class of 2015**



And Good Luck to the CWL undergraduates in your new school adventure!

**You make us
PROUD!**



Established 1954 Mike and Sharon Hankins
408 Main Street Corwith, IA 515-583-2467

Corwith-Wesley-LuVerne Class of 2015



Corwith-Wesley-LuVerne
Graduation Commencement
May 17, 2015
2:00 p.m.
CWL High School Gymnasium



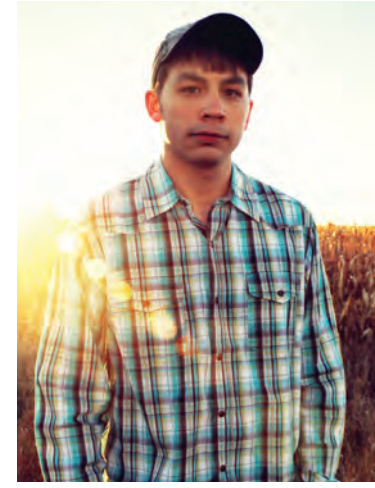
Brandy Armstrong
Daughter of Julie and Larry Armstrong.
Brandy plans to attend Iowa Lakes Community College in Algona to become a massage therapist.
Johnny's



Shayla Banchs
Daughter of Sarah and Ferdinand Banchs.
Shayla plans to attend Waldorf College in Forest City to study Business.
Carroll's Inc. Trucking



Esden Carroll
Son of Sheryl and Dave Carroll.
Esden plans to attend Iowa State University and major in Agricultural Business.
Klein Insurance Agency & Central Financial Group



John Genrich
Son of Kim Andreeson and Mike Genrich.
John plans to attend college.
Hancock County Economic Development Corporation



Starr Haler
Starr is the daughter of Tonya and Mel Haler.
Starr plans to attend South Dakota State University to pursue a BSN and to eventually become a Physicians Assistant.
Johnny's



Hailey Hanselman
Hailey is the daughter of Jeff Hanselman.
Hailey plans to attend Iowa Central Community College and then transfer to a four-year college to obtain a bachelor's degree in Nursing.
Johnny's



Kara Hauswirth
Kara is the daughter of Angie Tompkins and Keith Hauswirth.
Kara plans to attend the University of Nebraska - Lincoln to major in Journalism and Business.
Klein Insurance Agency & Central Financial Group



Johnathan Hinz
Johnathan is the son of Beth Hinz.
Johnathan plans to attend NIACC and become a welder.
Johnny's

CWL Class of 2015 Motto
"We have come a long way, but not half as far as we will go."

Class Colors
Black and Silver

Class Flower
White Daisy
Tipped in Maroon

Robe Colors
Boys ~ Black
Girls ~ Silver

Senior Class Officers
President: Kara Hauswirth
Vice President: John Genrich
Secretary/Treasurer: Danielle Young
Student Council Reps: Jordan Nygaard and Esden Carroll

Senior Class Sponsors
Mrs. Alt
Mr. Funnemark

CWL Class of 2015
Brandy Armstrong
Shayla Banchs
Esden Carroll
Jon Genrich
Starr Haler
Hailey Hanselman
Kara Hauswirth
Johnathan Hinz
Constance Jennings
Kobe Lawson
Jordan Nygaard
Dakota Witham
Danielle Young



Constance Jennings
Constance is the daughter of Leah and David Kiefer.
Constance plans to attend college.
Comm1



Kobe Lawson
Kobe is the son of Lisa and Matt Lawson.
Kobe plans to attend Northwest Iowa Community College in Sheldon in the Power Lineman Technician Program.
Carroll Implement Ltd



Jordan Nygaard
Jordan is the daughter of Erica and Chris Nygaard.
Jordan plans to attend the University of Northern Iowa to major in Elementary Education.
Klein Insurance Agency & Central Financial Group



Dakota Witham
Dakota is the son of Jennifer and Clint Witham.
Dakota plans to attend Job Corps and to eventually join the military.
Johnny's



Danielle Young
Danielle is the daughter of Kim Young-Tolsdorf and Brad Tolsdorf.
Danielle plans to study Elementary Education, become a teacher and possibly start her own small business.
Westview Care Center

Congratulations CLASS OF 2015!




Grain hopper, Flatbed, Detach Machinery, Trailer




Carroll's Inc. Trucking and Carroll Implement Ltd.
LuVerne, IA 515-882-3261 www.carrollimplement.com


Find **YOUR** place at **Waldorf College!**
in Forest City, Iowa, and Online!



RECEIVE A \$500 SCHOLARSHIP JUST FOR VISITING CAMPUS!

Visit our Website or call to learn more! www.Waldorf.edu | 800.292.1903

*Contact an admissions counselor to arrange your visit! Waldorf College is accredited by the Higher Learning Commission of the North Central Association of Colleges and Schools. For gainful employment disclosures, visit: www.waldorf.edu/disclosure



History of Schools

By Emilie Jenson

Wesley School 1873-2009

The first students were taught in Wesley Schools in 1873.

In 1874, a two-room school building was erected just north of the railroad tracks and the Wesley Independent School district was established that same year.

Due to an increase in students, a new two-story wood frame school was built in 1895 for around \$10,000 and housed students through 11th grade. A 12th grade class was added in 1911, because the 12th grade was added, there were no graduates in 1911.

In 1938, the brick gymnasium was added to the existing structure and dedicated

in 1939.

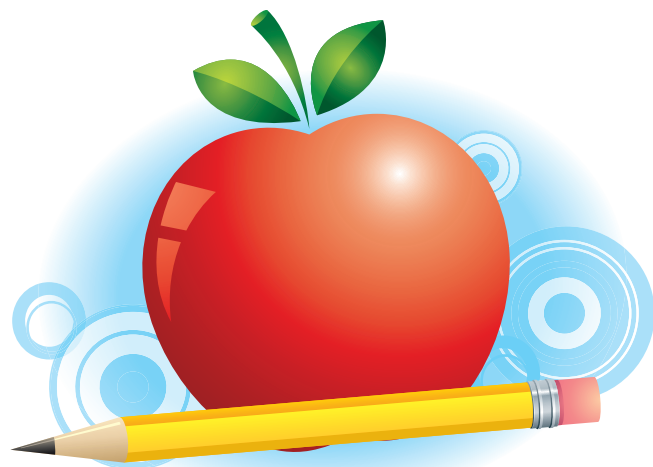
The school would house kindergarten through 12th grade until 1958 when the Cowith and Wesley schools combined to become the Corwith-Wesley community school district.

In 1965, the wooden school structure burned to the ground.

The remaining building continued to house an elementary school. In 2003, it housed kindergarten and first grades from Corwith-Wesley and second through fourth grades from Corwith Wesley and LuVerne. Due to declining enrollment, the Wesley building closed its doors following the 2008-2009 school year.



The class of 1958 was the final class at Wesley High School.



Congratulations, Class of 2015!

Some might say they saved the best for last!
Good Luck in your future endeavors!



515.882.3401
LuVerne, IA



CONGRATULATIONS

2015 CWL GRADUATES!

Build upon today's success for a great future!



IOWA STATE BANK
Helping People Succeed!
Member FDIC

Algona | Corwith | Ruthven | Wesley
www.BankISB.com
Find us on Facebook

History of Schools

By Emilie Jensen

LuVerne School 1881-2015

The LuVerne school was first established in 1881 with the first school building built in 1882.

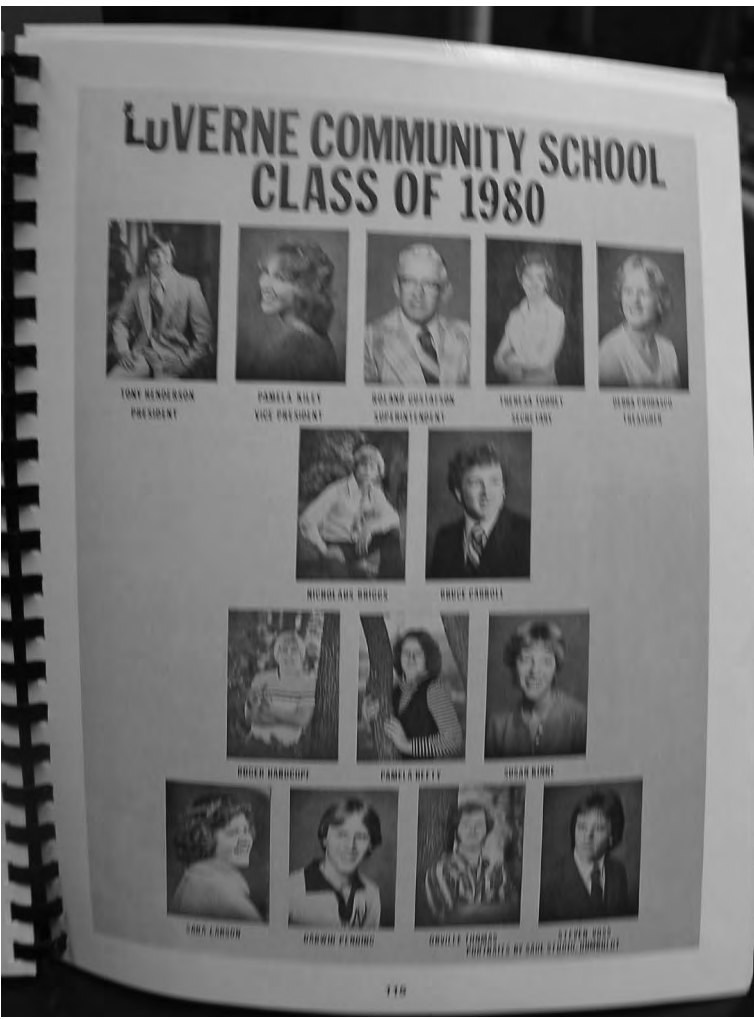
By 1886, enrollment at the LuVerne school had grown enough that a new two-story building was constructed that year.

The LuVerne Independent School District was formed in 1889 and the first high school class graduated in 1894. In 1910 the schoolhouse was destroyed by fire and a new brick building was completed in 1911.

The LuVerne Schools housed their own high school until 1980 when they became the first in the state to share all day high school classes with the neighboring Corwith-Wesley Community Schools. Today, the two remain separate districts with all students in pre-kindergarten through sixth grade attending school in LuVerne and seventh through 12th grades attending classes in Corwith through the whole-grade sharing agreement.

In October 2014, voters in the Corwith-Wesley district decid-

ed to dissolve the district at the conclusion of the 2014-2015 year. Around 87 percent of the Corwith-Wesley school district's land will be absorbed by the LuVerne Community School District in 2015. As a result, students from the Corwith Wesley district will attend Pre-kindergarten through sixth grade in the LuVerne Schools with junior high and high school students going to nearby Algona Schools though a whole-grade sharing agreement starting in the 2015-2016 school year.

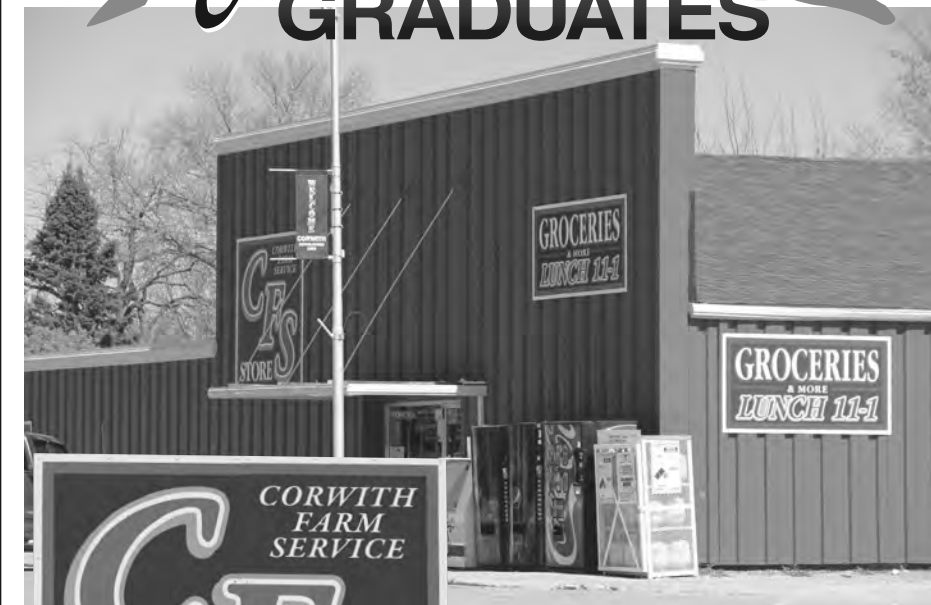


The final LuVerne High School class before sharing with Corwith-Wesley graduated in 1980.



This school is being preserved in downtown LuVerne.

Congratulations, GRADUATES



Join us for Lunch 11-1
Groceries & More!

**CORWITH
FARM SERVICE**

515.583.2262

Best wishes, CWL Class of 2015



Good luck to the undergraduates at their new school

Inspira Salon 515-679-4500
209 W. Main, Wesley

Congrats 2015 Graduates!

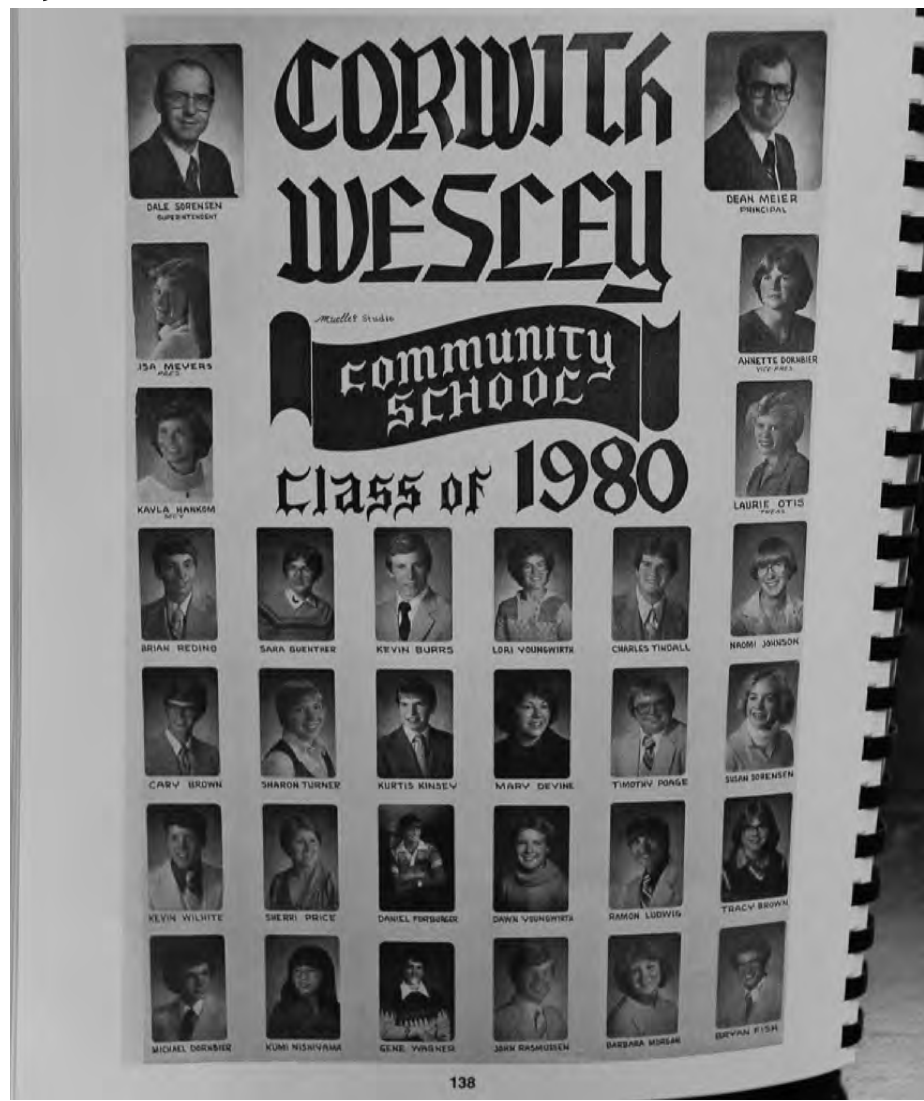


Best Wishes from Dave and Renee Burma
202 NW Elm Street, Corwith, IA 515-583-2205

Corwith-Wesley Schools



The class of 1959 was the first shared graduating class of Corwith-Wesley schools



The last Corwith-Wesley Class graduated in 1980. The following year LuVerne would join them in a sharing agreement.



Congratulations Graduates!

GOLD-EAGLE
Cooperative

Grain • Feed • Seed • Fertilizer • Chemicals • Custom Application
 Providing Quality Services and Products
 Innovatively, Profitably, and Professionally

Our Office hours at all locations are 7:30 a.m. - 4:30 p.m.

Corwith 515-583-2462	Wesley 515-679-4272	Titonka 515-928-2272
--------------------------------	-------------------------------	--------------------------------

CONGRATULATIONS CWL SENIORS!!

PMC Advantage
Insurance Services, Inc.
A Pharmacists Mutual Company
800-258-4408

McPEAK TRENCHING, INC.

"For All Your Backhoe and Trenching Needs"

DAVE McPEAK LuVerne, IA 50560 (515) 882-3700	TERRY McPEAK Renwick, IA 50577 (515) 824-3618
---	--

Fax 515-882-3313

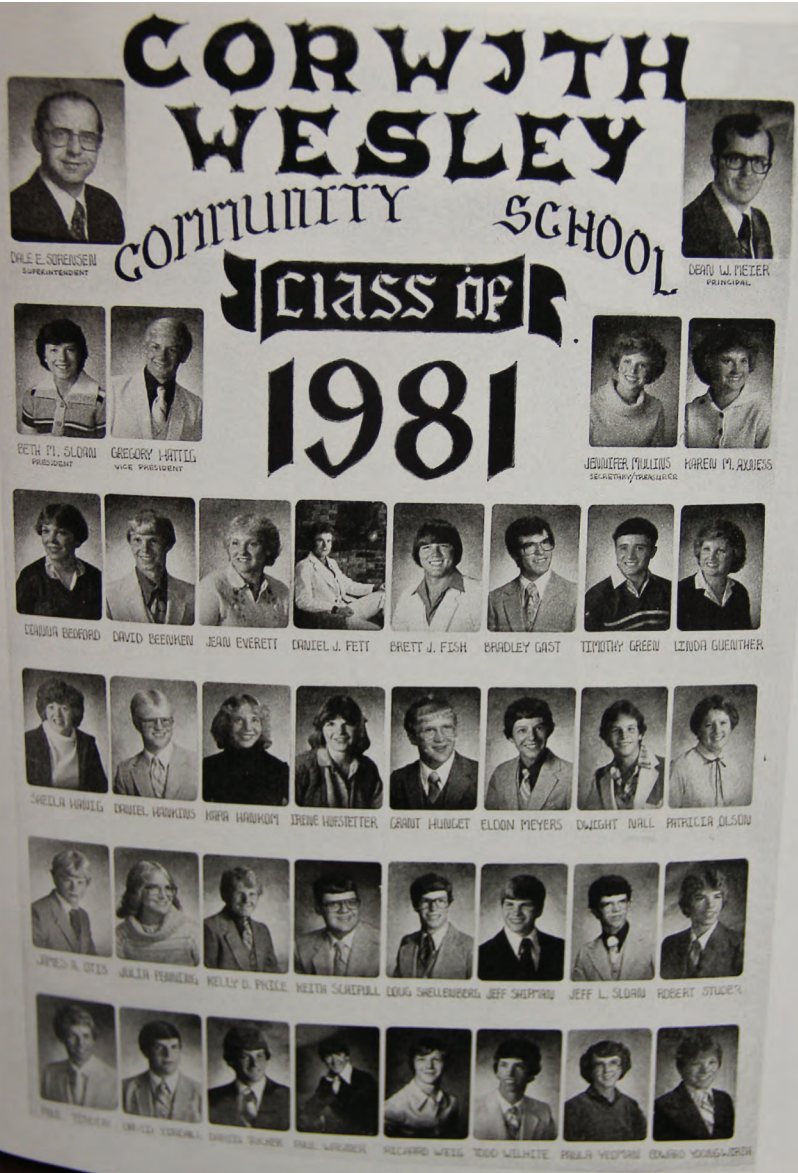
Our Office hours at all locations are 7:30 a.m. - 4:30 p.m.

Corwith 515-583-2462	Wesley 515-679-4272	Titonka 515-928-2272
--------------------------------	-------------------------------	--------------------------------

Corwith-Wesley-LuVerne 2014 Homecoming



The very last CWL homecoming court in 2014 included senior queen candidates Starr Haler, Kara Hauswirth and Dani Young and king candidates Esden Carroll, Jonathan Hinz and Kobe Lawson. Freshman attendants were Payton Garman and Megan Krieps, sophomore attendants were Mariah Burma and Luis Roque Castro and junior attendants were Ali Foth and Tyson Halsrud.




The first shared Corwith-Wesley and LuVerne high school class graduated in 1981.

From childhood to adulthood - We're always here for you



Lacy Halsrud, ARNP



**Congratulations
CWL Class of 2015
Thanks for the Memories!**



HCHS
HANCOCK COUNTY
HEALTH SYSTEM
*Your Health - Our Care...
A Lasting Partnership*

103 Main St. E • Wesley, IA 515-679-4285



Congratulations CWL Class of 2015

And Best Wishes to the Undergraduates as they start their new, exciting adventure!



**The Perfect Gift for Graduation
Birthday, Anniversary, etc.
A Cenex Gift Card**

Any Amount from
\$5 to \$200

Buy the card at our Classic Stop Convenience Store at Wesley and this card is good at Algona or any of the Cenex gas stations located almost everywhere!

Any amount from \$5 to \$200! Great for the senior going off to college or the high school student needing gas to get to school or work!



Just like CWL, we too have a long history in this area!

K & H Cooperative Oil Company was founded in 1930 to serve members in Kossuth and Hancock counties as well as much of northern Iowa and southern Minnesota

Buy your card at
K & H Classic Stop
301 W. Main
Wesley, Iowa

**Gas Card Good at all
Cenex gas stations**



Wesley Office
K & H Classic Stop is located
right across the street!

Serving all of North Central Iowa
and Southern Minnesota
Wesley 1-800-244-6101
Clear Lake 1-800-244-6691
Office Hours:
7:30 a.m. to 4:30 p.m.
Monday-Friday



Board members: Cordell Satre, Jay Olsen, Paul Brown, Ken Helderfer, Brad Watson, Reuben Skow, Mark Blair and John Hobscheidt.