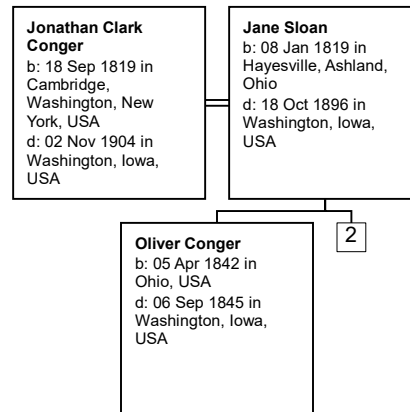
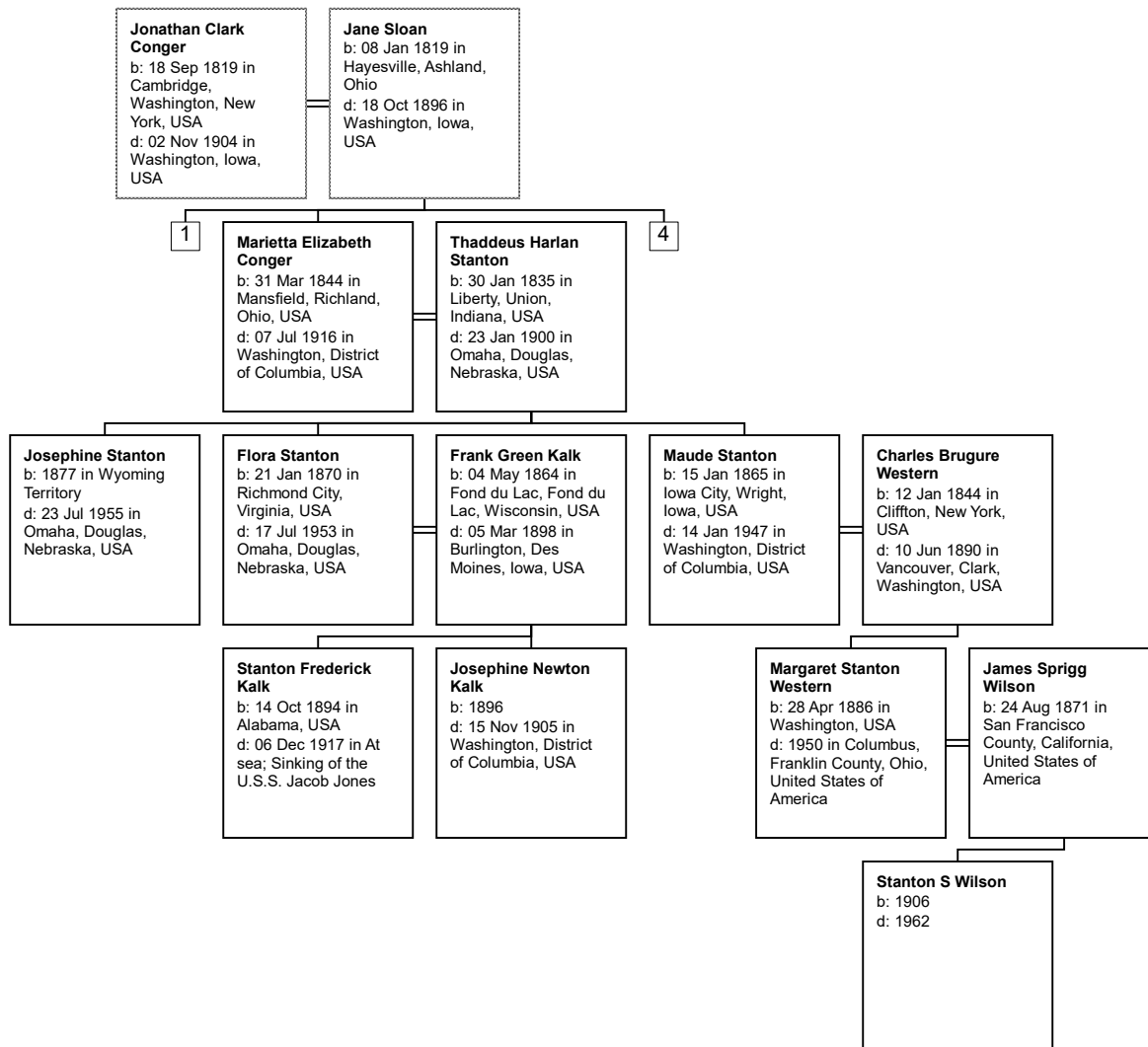
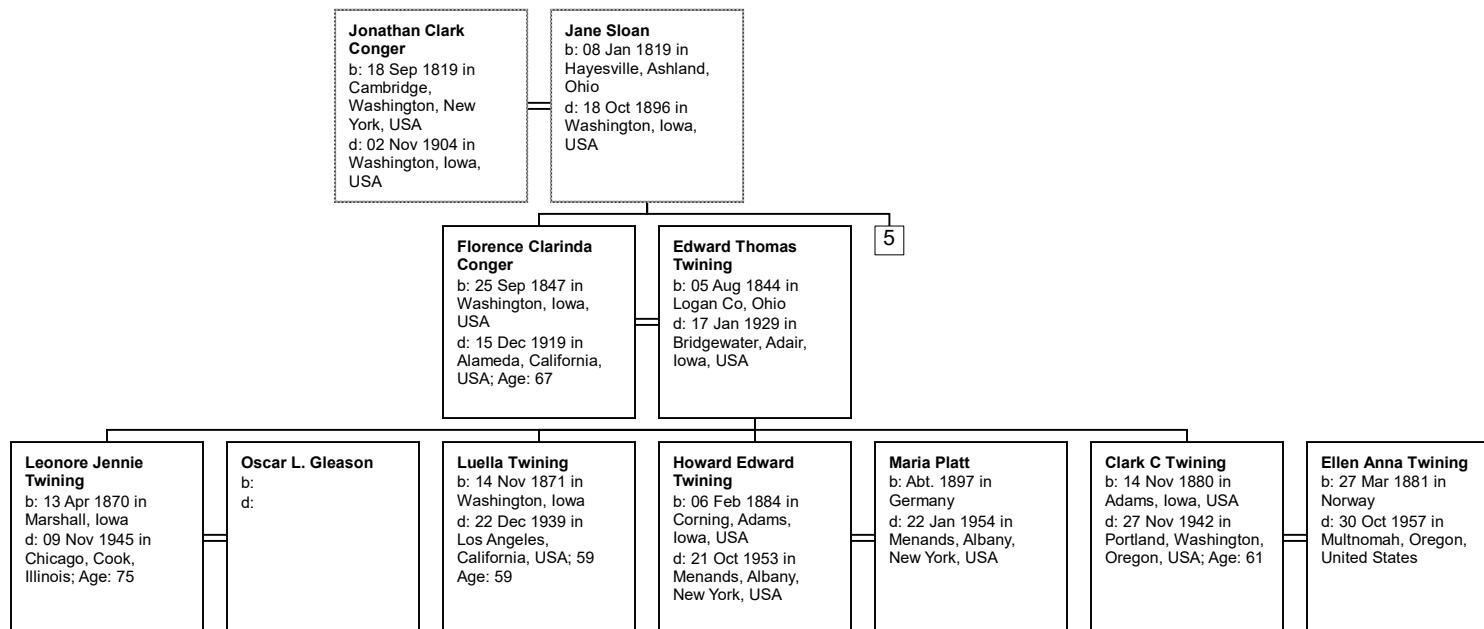
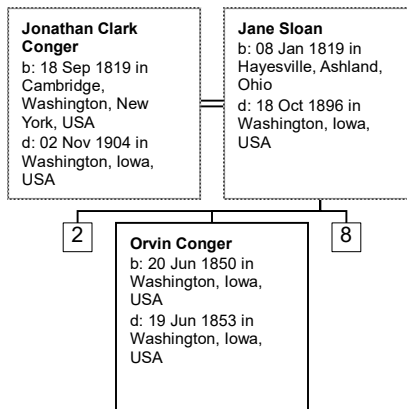


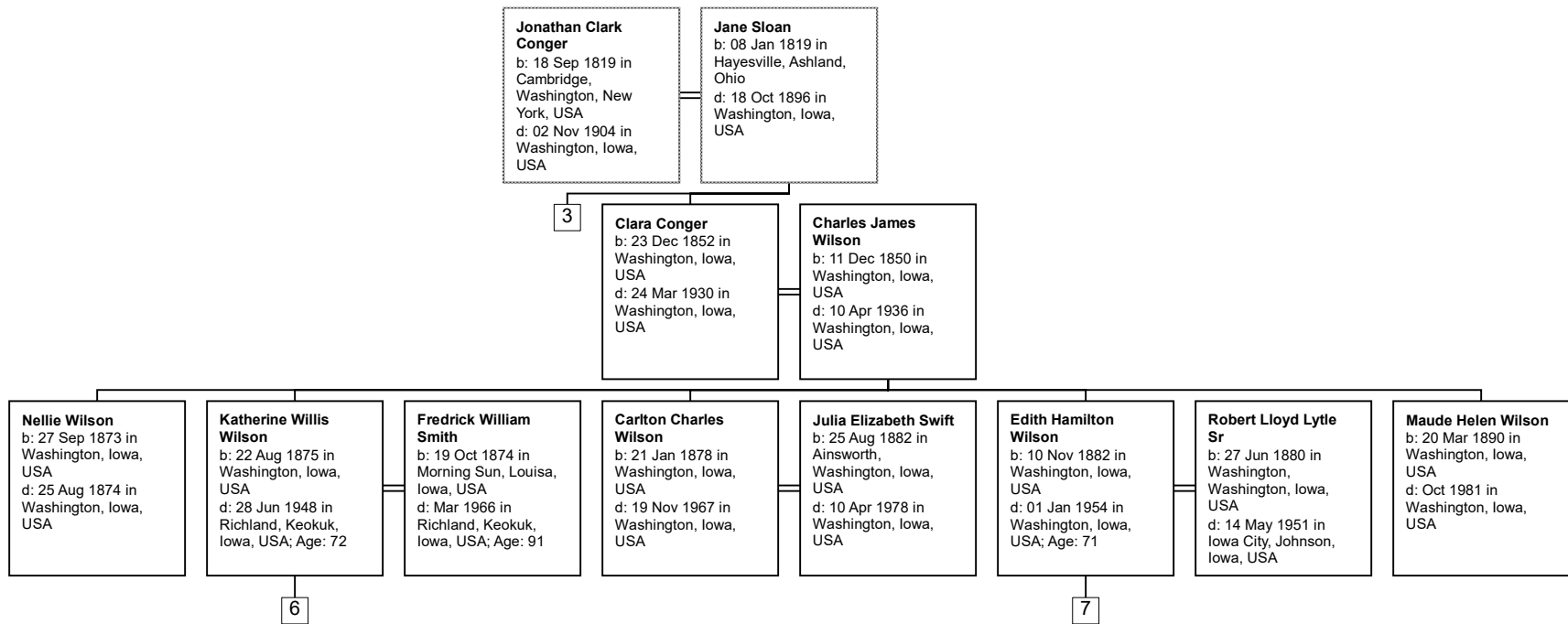
Descendant Chart for Jonathan Clark Conger

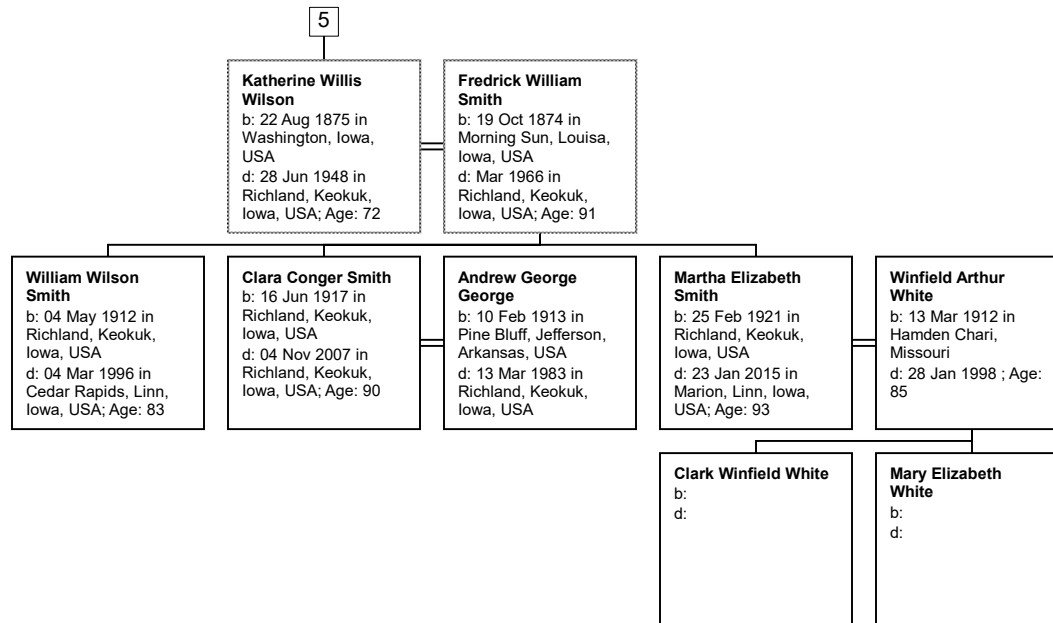












5

Edith Hamilton Wilson
b: 10 Nov 1882 in Washington, Iowa, USA
d: 01 Jan 1954 in Washington, Iowa, USA; Age: 71

Robert Lloyd Lytle Sr
b: 27 Jun 1880 in Washington, Washington, Iowa, USA
d: 14 May 1951 in Iowa City, Johnson, Iowa, USA

Charles Alexander Lytle
b: 27 Apr 1905 in Washington, Washington, Iowa, USA
d: 25 Dec 1978 in Newton, Middlesex, Massachusetts, USA

Lorraine Eva Lytle
b: 11 May 1905 in Larned, Pawnee, Kansas, USA
d: 13 Mar 1993 in Franklin, Williamson, Tennessee, USA

Robert Lloyd Lytle Jr
b: 19 May 1910 in Washington, Washington, Iowa, USA
d: 19 Jul 1989 in Iowa City, Johnson, Iowa, USA

Virginia Grace Radtke
b: 23 Sep 1915 in Wever, Lee, Iowa, USA
d: 23 Dec 2011 in Washington, Washington, Iowa, USA

Carlton W Lytle
b: 26 May 1911 in Washington, Washington, Iowa, USA
d: 23 Apr 1996 in Sun City, Maricopa, Arizona, USA; Age: 84

Kathryn Lent
b: 15 Oct 1913 in Galva, Ida, Iowa, USA
d: 29 Mar 2002 in Sun City, Maricopa, Arizona, USA

John Conger Lytle
b: 01 Dec 1913 in Washington, Washington, Iowa, USA
d: 27 Jul 2008

Henrietta C Hull
b: 03 Jul 1914 in Washington, Washington, Iowa, USA
d: 28 Oct 2008 in Washington, Washington, Iowa, USA; 94 Age: 94

Linda Lytle
b: 1946
d: 2000

