

HAWKEYE HERITAGE

A PUBLICATION OF THE IOWA GENEALOGICAL SOCIETY

Volume 44, Issue 1
Spring 2010



Philatelic genealogy: Using old envelopes and postcards as genealogical sources

Iowa Genealogical Society Chapters

Adair County Anquestors	% Greenfield Library Box 328	Greenfield IA 50849-0328
Adams County Gen Society	% Public Library, 603 9th Street	Corning IA 50841-1304
Appanoose County Gen Society	PO Box 684	Centerville IA 52544-0691
Audubon Co Gen Society %B Duvall	505 Brayton St	Audubon IA 50025-1301
Benton County Genealogical Society	1808 9th Ave	Belle Plaine IA 52208-1215
North East Iowa Gen Society	503 South St	Waterloo IA 50701-1517
Boone County Gen Society	PO Box 453	Boone IA 50036-0453
Bremer County Gen Society	% B Kimball 824 N Cherry St	Shell Rock IA 50670-9616
Buchanan County Gen Society	103 4th Ave. S. E.	Independence IA 50644-0004
Buena Vista County Gen Society	221 W Railroad St	Storm Lake IA 50588-2448
Butler County Gen Society	PO Box 534	Allison IA 50602-0534
Calhoun Co Genies	424 Main St	Rockwell City IA 50579-1419
Carroll Co Gen Society	PO Box 21	Carroll IA 51401-0021
Cass County Gen Society	% Public Library 507 Poplar St	Atlantic IA 50022-1241
Cedar County Gen Society	PO Box 52	Tipton IA 52772-0052
(Cerro Gordo) North Central Gen Society	PO Box 237	Mason City, IA 50402-0237
Cherokee County Tree Stompers	4820 M Avenue	Meriden IA 51037-7001
Chickasaw County Gen Society	Box 434	New Hampton IA 50659-0434
Clarke County Gen Society	300 S Fillmore St	Osceola IA 50213-1414
(Clay) Iowa Lakes Gen Society	600 W 11th St	Spencer IA 51301-3235
Clayton County Gen Society	PO Box 846	Elkader IA 52043-0846
Clinton Co Gen Society %Norma A. Lindsey	717 S 2nd St Apt 307	Clinton, IA 52732-4244
Clinton County/Gateway Gene Society	PO Box 2256	Clinton, IA 52733-2256
Crawford County Gen Society	% Norelius Library, 1403 1st Ave S	Denison IA 51442-2014
Dallas County Gen Society	PO Box 264	Dallas Center IA 50063-0264
Davis County Gen Society	PO Box 94	Bloomfield IA 52537-0094
Delaware County Gen Society	304 N Franklin	Manchester IA 52057-1520
Des Moines County Gen Society	PO Box 493	Burlington IA 52601-0493
Iowa Lakes Gen Society	600 W 11th St	Spencer IA 51301-3235
Dubuque County / Key City Gen Society	PO Box 13	Dubuque IA 52004-0013
Emmet Co Gene Society % Pub Library	613 Central Ave	Estherville IA 51334-2294
Fayette Co / Oelwein Area Gen Society	PO Box 389	Oelwein IA 50662-0389
Fayette County Gen Society	100 N Walnut St	West Union IA 52175-1347
Franklin County Gen Society	% Hampton Library, 4 S Federal St	Hampton IA 50441-1934
Fremont Co Historical Society Gen Dept	PO Box 671	Sidney IA 51652-0337
Greene County Gen Society	PO Box 133	Jefferson IA 50129-0133
Guthrie County Gen Society	PO Box 96	Jamaica IA 50128-0096
Hamilton Heritage Hunters Gen Society	943 1st St	Webster City IA 50595-2001
Hancock County Gen Society	PO Box 81	Klemme IA 50449-0081
Harrison County Gen Society	% L. Dickman, 2810 190th Trail	Woodbine IA 51579-4063
Howard-Winneshiek County Gen Society	PO Box 362	Cresco IA 52136-0362
Humboldt County Gen Society	30 6th St N	Humboldt IA 50548-1736
Ida County Genealogical Society	1111 South Main St	Ida Grove IA 51445-1708
Iowa County Gen Society	PO Box 207	North English IA 52316-0207
Jackson County Gen Chapter	PO Box 1065	Maquoketa IA 52060-1065
Jasper County Gen Society	PO Box 163	Newton IA 50208-0163
Jefferson County Gen Society	2791 240th St	Fairfield IA 52556-8518
(Johnson) Iowa City Gen Society	PO Box 822	Iowa City IA 52244-0822
Jones County Gen Society	PO Box 174	Anamosa IA 52205-0174
(Keokuk) Keo-Mah Genealogical Society	PO Box 209	Oskaloosa IA 52577-2807
Kossuth County Genealogical Society	% Algona Library, 210 N Phillips St	Algona IA 50511-1735

Lee County Gen Society Of Iowa	PO Box 303	Keokuk IA 52632-0303
(Lee) Old Fort Genealogical Society	PO Box 1	Fort Madison IA 52627-0001
Genealogical Society Of Linn County	PO Box 175	Cedar Rapids IA 52406-0175
Louisa County Genealogical Committee	722 N Chestnut	Wapello IA 52653-1009
Lucas County Gen Society % Public Lib	803 Braden Ave	Chariton IA 50049-1742
Madison County Genealogical Society	PO Box 26	Winterset IA 50273-0026
(Mahaska Co) Keo-Mah Genealogical Society	209 A Ave E	Oskaloosa IA 52577-2807
Marion County Gen Society	PO Box 385	Knoxville IA 50138-0385
Marshall County / Central Iowa Gen Society	PO Box 945	Marshalltown IA 50158-0945
Mills County Gen Society	% Glenwood Library, 109 N Vine St	Glenwood IA 51534-1516
Monona County Gen Society	PO Box 16	Onawa IA 51040-0016
Monroe County Gen Society	203 Benton Ave E	Albia IA 52531-2036
Montgomery County Gen Society	705 Washington Ave	Red Oak IA 51566-2439
Muscatine County Gen Society	323 Main St	Muscatine IA 52761-2867
(O'Brien & Osceola) Iowa Great Lakes	600 W 11 th Street	Spencer IA 51301-3235
Palo Alto County Gen Society	% Public Library, 707 N Superior	Emmetsburg IA 50536-1022
(Plymouth Co.) Northwest Iowa Gen Society	46 1st St SW	Le Mars IA 51031-3696
Laurens Genies/Pocahontas County	273 N 3rd St	Laurens IA 50554-1215
Pocahontas Genies	14 2nd Ave NW	Pocahontas IA 50574-1611
(Polk Co) Ankeny Gen Society	1110 NW 2nd St	Ankeny IA 50023-2320
Polk Co. Genealogical Society	3221 Villa Vista Dr	Des Moines IA 50316-1338
(E. Pottawattamie) Botna Valley Gen Society	PO Box 693	Oakland IA 51560-0693
Pottawattamie Co. Gene Society	PO Box 394	Council Bluffs IA 51502-0394
Poweshiek Co. Historical & Gen Society	PO Box 280	Montezuma IA 50171-0280
Ringgold Co. Gene Society % Betty Jo Ruby	202 Adams St	Diagonal IA 50845-1001
Sac County Gen Society	PO Box 54	Sac City IA 50583-0054
Scott County Gen Society	PO Box 3132	Davenport IA 52808-3132
Greater Sioux County Gen Society	102 S Main Ave	Sioux Center IA 51250-1536
Story County Gen Society	PO Box 692	Ames IA 50010-0692
Tama Co Historical Soc & Genealogical Lib	200 N Broadway St	Toledo IA 52342-1308
Taylor County Gen Society	PO Box 8	Gravity IA 50848-0008
Union County Gen Society	% Gibson Library, 200 W Howard St	Creston IA 50801-2331
Van Buren County Gen Society	PO Box 160	Keosauqua IA 52560-0160
Wapello County Gen Society	PO Box 163	Ottumwa IA 52501-0163
Warren County Gen Society	P O Box 151	Indianola IA 50125-0151
Washington County Gen Society	PO Box 446	Washington IA 52353-0446
Wayne County Gen Society	% Lecompte Library, 110 S Franklin	Corydon IA 50060-1518
Webster County Gen Society	PO Box 1584	Fort Dodge IA 50501-1584
Lime Creek/Winnebago County	115 East "L" St	Forest City IA 50436-1499
(Winneshiek Co) Decorah Genealogy Assoc.	202 Winnebago	Decorah IA 52101-1812
Woodbury County Gen Society	PO Box 624	Sioux City IA 51102-0624
Wright County Gen Society	PO Box 225	Clarion IA 50525-0225
Special Interest Groups		
African-American Special Interest Group	628 E Grand Ave	Des Moines IA 50309-1924
Fairfax Co Gen Society, Midwestern Group	PO Box 2290	Merrifield VA 22116-2290
German Special Interest Group	628 E Grand Ave	Des Moines IA 50309-1924
Irish Special Interest Group	628 E Grand Ave	Des Moines IA 50309-1924
Norwegian Special Interest Group	628 E Grand Ave	Des Moines IA 50309-1924
Pafways Of North Iowa	1705 S Coolidge Ave	Mason City IA 50401-5514

HAWKEYE HERITAGE

SPRING 2010
VOLUME 44, NUMBER 1

PRICE

MEMBERS \$5.00
NON-MEMBERS \$9.00
PLUS \$3.00 POSTAGE FOR BOTH
IF MAILED

Editor

Barbara L. Hug

Editorial Committee

Diane Densmore

Carl Nollen

Susan Claman

IGS Staff

Librarian

Billie Murano

Administrative Assistant

Debra Chase

Assistant Librarians

Susan Claman

IGS Executive Board - 2010

President, Barbara Hug

1st Vice President, Carla Anders

2nd Vice President, Kathy Gourley

Secretary, Diane Densmore

Treasurer, LaWanda Nepstad

Hawkeye Heritage is published by the
Iowa Genealogical Society (IGS).

HAWKEYE HERITAGE

Table of Contents

Iowa Counties and Regions 5

Research Assistance..... 6

Philatelic Genealogy in Iowa: An Introduction 7

Iowa Pioneer, Century & Statehood Certificates..... 15

United Spanish War Veterans..... 16

Naturalizations - First Papers..... 19

Library Acquisitions 24

Iowa Genealogical Society Queries 30

Name Index..... 31

IGS Membership - 2010

\$35.00 for a single membership

\$45.00 for a family membership

Send dues by mail or electronically using our website

www.iowagenealogy.org/

Iowa Genealogical Society

628 East Grand Avenue

Des Moines IA 50209-1924

(515) 276-0287 - Phone

(515) 727-1824 - FAX

E-mail: igs@iowagenealogy.org

Copyright © 2010
Iowa Genealogical Society

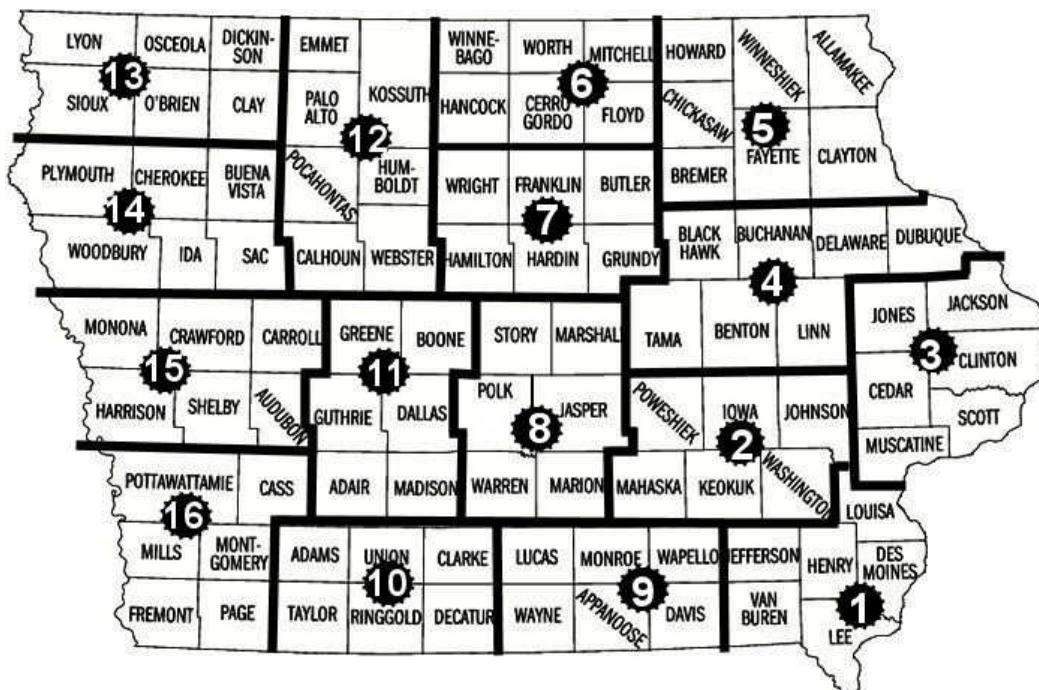
From the Editorial Committee:

We are pleased to announce that we are going to go back to four issues this year and hopefully thereafter. The problem has always been the cost of printing and postage and now that we are on-line, we can bring back the important content that so many of you have wanted.

This also means that we'll need articles for the newsletter. The main requirements are that they be genealogy related, well written and well documented. You do not have to be a member to submit articles. E-mail your article as an attachment to: IGS@iowagenealogy.org

A number of people have asked for the publication in a printed form, "even if I have to pay extra," they've said. To order this issue please download and complete the order form for the Hawkeye Heritage at <http://www.iowagenealogy.org/publications/index.htm>. On the form for the Volume/Issue write in VOL 44, No. 1. In the Date column write in Hawkeye Heritage – Spring – 2010. The cost is found on the Table of Contents page.

Iowa Counties and Regions



2010 Region Representatives on Board of Directors

Region 1	Vacant	Region 6	Vacant	Region 11	James Lawton
Region 2	Alan Neve	Region 7	Eileen Johnson	Region 12	Grace Hertz
Region 3	Pat Brder	Region 8	Nicoe Hart	Region 13	Virgil Karstens
Region 4	Mike Magee	Region 9	Betty Cross	Region 14	Janice Danielson
Region 5	Bernice Kimball	Region 10	Sandra Leininger	Region 15	Donna Kelly
				Region 16	Linda Abercrombie

Research Assistance

The Iowa Genealogical Society provides an hourly research service. Please follow the instructions outlined below or see our website at www.iowagenealogy.org to access this service.

Restrictions

We are able to do only one person per request.
We cannot research any person who might be alive.
We cannot do adoption research.

Resource Availability

Marriage records are the only Iowa Vital Record available before 01 Jul 1880. We will use census records to establish an approximate birth date if possible. Although some births and deaths were recorded, neither was mandatory until 1929.

Fees

Members: \$15 per hour includes copying and postage.
Non-members: \$25 per hour includes copying and postage.

Information Needed for Research

About YOU, the requestor

Your name:
Mailing address:
City, State/Province, Zip/Postal Code:
Country, if other than United States:
E-mail if you have one.

About your research request

Surname (required):
Given name (required): (Include as much of the following information as possible)
Birth Date (please spell out the month):

Birth Location (City, State, and/or County):

Marriage Date (please spell out the month):

Marriage Location (City, State, and/or County):

Spouse's Name:

Death Date (please spell out the month):

Death Location (City, State, and/or County):

Father's Name:

Mother's Name:

Sibling Name (s):

Please tell us specifically what you want us to find for you. Please be specific. We do not want to waste your money repeating research you've already completed! What resources have you already researched?

Payment Options

MAIL: Submit payment with the completed Information Needed for Research

Iowa Genealogical Society
Attention: Research
628 East Grand Avenue
Des Moines IA 50309-1924.

ON-LINE: Complete the Information Needed for Research information and email it to:
research@iowagenealogy.org

Use our website www.iowagenealogy.org
Research Assistance to pay using credit card or PayPal.

NOTICE: Payment must be received before research is started.

LET IGS ASSIST YOU IN YOUR RESEARCH

Philatelic Genealogy in Iowa: An Introduction

by James R Miller

Old envelopes and postcards from postal history collections are a source of genealogical information.[1] This paper presents eighteen old envelopes and postcards from Iowa with key genealogical data on the sender and/or recipient to introduce the Philatelic Genealogy website and database (<http://philgen.org>). The website was launched in March 2009 to begin building a digital archive of envelope and postcard images with genealogical value and to promote an exchange between postal history collectors and genealogists. The site has grown to more than 1,100 envelopes and postcards. Every item includes a photo (used with the owner's permission) and U.S. census or similar details on the sender and/or addressee. The website at present has 41 letters and/or postcards sent to or from Iowa.

Finding a European immigrant's birthplace can be difficult. A return address or a postmark can provide a clue, especially when the sender and addressee have the same family name. Otto Gamb of Clinton, Iowa sent an envelope in 1908 to Pfarrer (Minister) A. Gamb in Obergeis bei (by, or near) Hersfeld, Hesse, Germany.[Figure 1]



Figure 1. 1908 envelope from Clinton, Iowa to Obergeis, Germany (Photo from Collection of Jim Miller)

An Otto Gamb, from Germany, is in Clinton in the 1915 Iowa census.[2] An Otto Gamb, en route to Dubuque, is on a 1905 ship's passenger list with Obergeis, the village to which the envelope was mailed in 1908, as his last permanent residence.[3] The envelope's address by itself could lead a genealogist to Otto Gamb's apparent home in Germany. As with any source of genealogical information, postal history must be used in

combination with other sources before reaching any conclusion.

George Damm of George, Iowa sent an envelope in 1913 to Mr. and Mrs. George D. Damm of Norden, Germany.[Figure 2]



Figure 2. 1913 envelope courtesy of George, Iowa to Norden, Germany (Photo from A. Garstka)

A George Damm, from Germany, is in Wheeler Township in the 1910 U.S. census.[4] Wheeler Township and the City of George are adjacent jurisdictions. George Diecke Damm, residing in George, applied for a U.S. passport in 1913 and gave his birthplace as "Utwerdum," Germany.[5] The village of Uthwerdum is approximately 9 miles southeast of the city of Norden. The George D. Damm in Norden may be a member of George Damm's family (possibly his father) living near where George Damm was born.

Mrs. Bertha Goenne of Davenport, Iowa wrote to Johann F. Gönne of Bransbek, Germany in 1937.[Viewable at *Philgen.org*, search on Goenne] A Bertha S. (Mrs. Ernst C.) Goenne is in Davenport in the 1925 Iowa census [6] An on-line family tree at *Ancestry.com* shows that Ernst Christian Goenne was born in "Brandsbech," Germany.[7] The genealogist who posted the tree containing Bertha Goenne had not previously seen Bertha's handwriting, and she felt that by way of the handwriting she was "seeing" her ancestor.

Rein Terpstra of Monroe, Iowa wrote to Mary Terpstra of the Hague, Netherlands in 1903.[Viewable at *Philgen.org*, search on Terpstra] A Rein Terpstra, from "Holland," is in Monroe in the 1910 U.S. census.[8]

W. Trommershausen of Mason City, Iowa wrote to Dr. Trommershausen in Frankfurt am Main, Germany in 1906.[Figure 3]



Figure 3. 1906 envelope from Mason City, Iowa to Frankfurt, Germany (Photo courtesy of Jim Forte Postal History)

A Walter Trommershausen, from Germany, is in Mason City in the 1915 Iowa census.[9] I have not yet determined the relationship, if any, between Walter and Dr. Trommershausen and between Rein and Mary Terpstra.

John A. Anderson of 608 Foster Street, Burlington, Iowa received an envelope from Vaderstad, Sweden postmarked on 23 July 1889.[Figure 4]

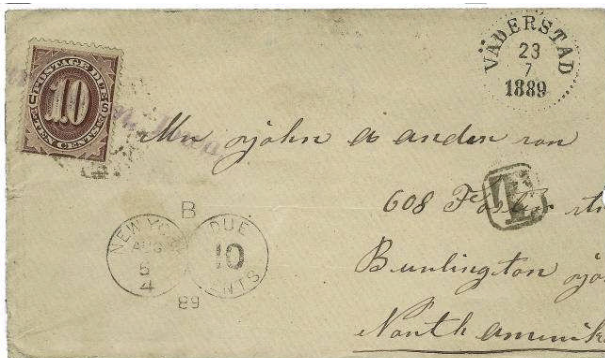


Figure 4. 1889 envelope from Vaderstad, Sweden to Burlington, Iowa (Photo courtesy of Robert A. Siegel Auction Galleries, Sale 966, Lot 2327)

There are at least five persons named John Anderson from Sweden in Burlington in the 1900 U.S. census.[10] I used the envelope's street address in combination with city directories to link the envelope to one of the five. A John A. Anderson at 608 Foster is in the 1890 Burlington City Directory, with an occupation of machinist at the Union Furniture Company.[11] A J. A. Anderson, working as a machinist hand at the Union Furniture Company, is in the 1900 Burlington City Directory and the directory's street index shows a John A.

Anderson and wife A.C. living at 531 South Leebrick.[12] A John A. and Amelia Anderson living at 531 Leebrick, both from Sweden, are in the 1900 U.S. census.[13]

Additional envelopes and postcards involving Iowa residents that were sent to/from the person's home country in Europe include Julius Backen (from Germany) of Pella, John Baermann (from Germany) of Dubuque, Emil Bockelman (from Germany) of Postville, Louisa Boes (from Germany) of Hawkeye, H.R. Claussen (from Germany) of Davenport, Jan De Wild (from the Netherlands) of Pella, William Fumetti (from Germany) of Cedar Rapids, Alveena Geeseka (from Germany) of Mount Pleasant, Carl Jensen (from Germany) of Everly, Rachel S. Nelson (from Norway) of Northwood, Joseph Riha (from Bohemia) of Elberon, Mary Thompson (from England) of Mingo, and John Van Meerten (from the Netherlands) of Charles City. Each item can be seen on *Philgen.org* by searching on the person's last name or their city. The item's description notes whenever the street address on the envelope or postcard matches the address in the census or other source document.

Not all envelopes and postcards sent to/from the home country will involve family and/or the exact birthplace. As with any source of genealogical information, postal history must be used in combination with other sources before reaching any conclusion.

In addition to finding a European birthplace, envelopes and postcards sent within the U.S. can show our ancestors in the context of their times, such as the westward expansion of the U.S. Thomas Drummond of Rush Creek, California received a stampless envelope via Spanish River and Sacramento, California that was postmarked on 26 July 1852 in Farmington, Iowa.[Figure 5].

Submit YOUR Letters & Postcards

Barbara Hug has agreed to enter letters and postcards for Iowa.

You'll need a clear photograph or scan of the addresses and a transcription of the information.

Contact her at bhug3@bigfoot.com for more instructions.



Figure 5. 1852 stampless envelope from Farmington, Iowa to Rush Creek, California via Sacramento and Spanish River (Photo courtesy of Schuyler Rumsey Philatelic Auctions, Sale 25, Lot 57)

Dolly L. Drummond, with 1 year-old Hannah, is in Farmington in the 1850 U.S. census.[14] An on-line family tree at *Ancestry.com* shows that Thomas Drummond and Dolly Lovern Rice were married in 1849 in Van Buren County, Iowa, and they had a daughter Hannah in 1849.[15] Thomas Drummond appears to have left Iowa during the California Gold Rush that began in 1848.

Mrs. Samantha K. Boake of Mount Pleasant, Iowa received a stampless envelope from Steinbergers (now Redwood City), California postmarked by hand on 10 May 1853.[16][Figure 6]

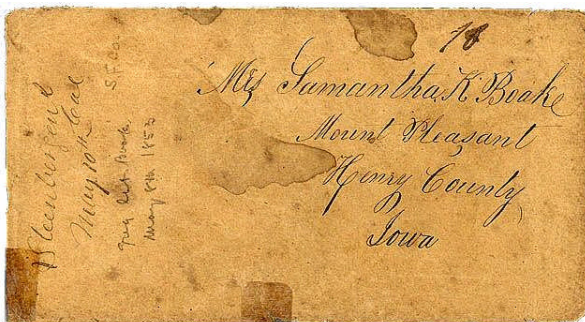


Figure 6. 1853 stampless envelope from Steinbergers (now Redwood City), California to Mount Pleasant, Iowa (Photo courtesy of Schuyler Rumsey Philatelic Auctions, Sale 31, Lot 111)

A Samantha K. Boak is in Marion Township in the 1850 U.S. census.[17] Mount Pleasant and Marion Township are adjacent jurisdictions.

J.J. Barclay of Fort Dodge, Iowa received an envelope from Breckenridge, Utah Territory (now Colorado) postmarked by hand on 13 September 1860.[Figure 7]



Figure 7. 1860 envelope from Breckenridge, Utah Territory (now Colorado) to Fort Dodge, Iowa (Photo courtesy of Schuyler Rumsey Philatelic Auctions, Sale 28, Lot 9)

A John J. Barclay is in Fort Dodge in the 1860 U.S. census.[18] A note on the envelope shows that it was sent by C.C. Carpenter. A Chester C. Carpenter is on the 1865-1866 Internal Revenue Service tax assessment list in Golden, Colorado.[19]

Miss Mary A. Latta of "Nebuda," Iowa received an envelope from Ashland Mills, Oregon postmarked 24 January 1870.[Figure 8]



Figure 8. 1870 envelope from Ashland Mills, Oregon to "Nebuda" (New Buda), Iowa (Photo courtesy of Schuyler Rumsey Philatelic Auctions, Sale 35, Lot 1192)

A Mary A. Latta, apparently unmarried, is in New Buda in the 1870 U. S. census.[20]

Miss Anna C. (or E.?) Kimm of Watkins, Iowa received an envelope from W. P. Harthill of Pine City, Washington postmarked on 26 February 1889 [Figure 9].

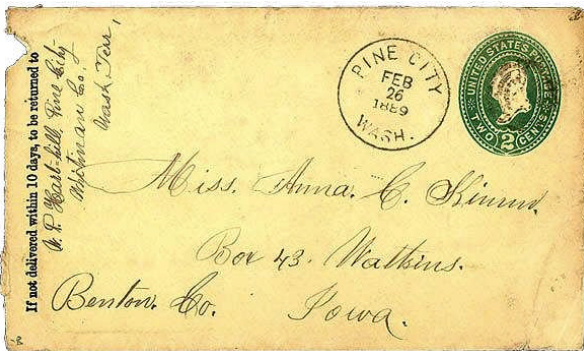


Figure 9. 1889 envelope from Pine City, Washington to Watkins, Iowa (Photo courtesy of Schuyler Rumsey Philatelic Auctions, Sale 35, Lot 1594)

An Anna Kimm is in Blairstown in the 1870 U.S. census.[21] Blairstown is about 5 miles west of Watkins. A Wm P. Harthill, with a wife from Iowa, is in Pine City in the 1900 U.S. census.[22] William Harthill's wife may be related to Anna Kimm.

Envelopes and postcards can also add to our knowledge of our ancestors' military service, political and social interests, recreation, and work. Mrs. E.E. Ruby of Winterset, Iowa received an envelope from Memphis, Tennessee in 1863.[Figure 10]



Figure 10. 1863 envelope from Memphis, Tennessee to Winterset, Iowa with note “Captured at Jackson, Miss. May 14th 63” and Confederate flag illustration (Photo courtesy of Schuyler Rumsey Philatelic Auctions, Sale 21, Lot 1989)

An Esther E. Ruby, apparently John Ruby's wife, is in Winterset in the 1860 U.S. census.[23] The envelope has a note written on it: “Captured at Jackson, Miss[issippi] May 14th [18]63.” A John Ruby enlisted in Winterset and served with the 4th Iowa Cavalry from 1861 to 1865 during the Civil War.[24] The unit fought at Jackson, Mississippi on 14 May 1863.[25] John Ruby appears to have sent the envelope to his wife following his capture. The envelope has an illustration of a Confederate flag.

L.S. Coffin of Fort Dodge, Iowa received an envelope from West Lebanon, Maine postmarked circa 1861.[Figure 11]



Figure 11. Circa 1861 envelope from West Lebanon, Maine to Fort Dodge, Iowa with illustration of John C. Frémont (Photo courtesy of Schuyler Rumsey Philatelic Auctions, Sale 29, Lot 3026)

A Lorenzo S. Coffin enlisted as a chaplain in the 32nd Iowa Infantry on 30 October 1862 at Fort Dodge.[26] The envelope has an illustration of John C. Fremont and may date from Fremont's 1856 presidential candidacy.[27]

Mr. S.R. Benson of Union, Iowa received an envelope from Cape Girardeau, Missouri circa 1863.[Figure 12] An S.R. Benson is in Union in the 1870 U.S. census.[28] The envelope has an illustration of a beardless Abraham Lincoln and may date from the 1860 presidential election.[29]



Figure 12. Circa 1863 envelope from Cape Girardeau, Missouri to Union, Iowa with illustration of Abraham Lincoln and split rail fence (Photo courtesy of Schuyler Rumsey Philatelic Auctions, Sale 26, Lot 1130)

James H. Burch of Knoxville, Iowa received an envelope from Saint Louis, Missouri circa 1861.[Figure 13] A James H. Burch is in Union in the 1856 Iowa State Census.[30] The envelope has illustrations of Union Civil War officers Winfred Scott and Robert Anderson.



Figure 13. Circa 1861 envelope from Saint Louis, Missouri to Knoxville, Iowa with illustrations of Union Civil War officers Winfred Scott and Robert Anderson (Photo courtesy of Schuyler Rumsey Philatelic Auctions, Sale 20, Lot 946)

James Q. McGiffin of Ida Grove, Iowa received an envelope from the “U.S. Flag-Ship Pensacola” postmarked 24 August 1883 at Wailuku, Hawaii.[Figure 14] A James Q. McGiffin is in Ida Grove in the 1885 Iowa State Census.[31] The envelope contains a letter describing the ship's voyage from Peru to Hawaii and sites the writer visited in Hawaii.[32]



Figure 14. 1883 envelope from “U.S. Flag-Ship Pensacola” at Wailuku, Hawaii to Ida Grove, Iowa (Photo courtesy of Schuyler Rumsey Philatelic Auctions, Sale 33, Lot 3499)

Mr. J.M. Beck of Fort Madison, Iowa received an envelope from Davenport, Iowa circa 1860.[Figure 15]

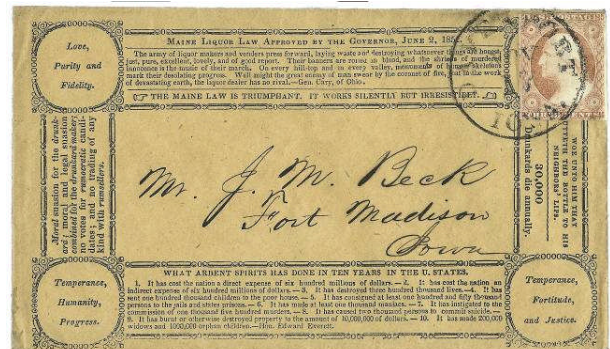


Figure 15. Circa 1860 envelope from Davenport, Iowa to Fort Madison, Iowa with text promoting temperance (Photo courtesy of Robert A. Siegel Auction Galleries, Sale 970, Lot 45)

J.M. Beck is in Fort Madison in the 1860 U.S. census.[33] The envelope has a long text promoting temperance.

Chas. Meyerhoff of Villisca, Iowa received an envelope circa 1912 from a hardware store operated by Andy Bryson in Nodaway, Iowa.[Figure 16] A Charles Meyerhoff is in Villisca [34] and an Andrew Bryson, a hardware merchant, is in Nodaway in the 1910 U.S. census.[35] The envelope has an illustration of a hunter.

Before postage stamps and envelopes became established in the 1850s, correspondence often consisted of a single sheet of paper with a letter written on one side and the other side used for the address, and then folded and sealed to make an envelope. Unlike envelopes that may be empty, folded letters have their original contents (unless the sender was willing to pay twice the postage to include a second sheet inside the folded letter).[36]

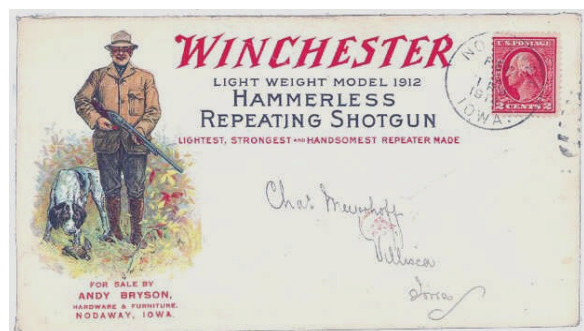


Figure 16. Circa 1912 envelope from Nodaway, Iowa to Villisca, Iowa with illustration of a hunter (Photo courtesy of Schuyler Rumsey Philatelic Auctions, Sale 25, Lot 325)

Reverend Wm Salter of Burlington, Iowa received a folded letter from New York, New York postmarked on 31 August 1848.[Figure 17]



Figure 17. 1848 folded letter from New York City to Burlington, Iowa (Photo courtesy of Robert A. Siegel Auction Galleries, Sale 870, Lot 911)

A William Salter, a “Congl. Clergyman” from New York, is in Burlington in the 1860 U.S. census.[37]

Morris W. Blair of Yellow Spring, Iowa received a folded letter postmarked by hand on 19 December 1849 from Stockton, California.[Figure 18] A Morris Blair is in Yellow Spring in the 1850 U.S. census.[38] Handwriting shows through the sheet in both of these folded letters. Because of their age and contents, folded letters hold great genealogical potential.

I hope this article has helped you see the range of information available from postal history. Many more envelope and postcard photos involving Iowa residents are available. Postal history vendors have given *Philgen.org* permission to use thousands of photos from their websites and archived philatelic auction catalogs and most have not yet been placed on *Philgen.org*. More than 1,700 involve Iowa, and these sources are a fraction of available postal history items. Other potential sources are being contacted.



Figure 18. 1849 stampless folded letter from Stockton, California to Yellow Spring, Iowa (Photo courtesy of Schuyler Rumsey Philatelic Auctions, Sale 28, Lot 324)

Acknowledgments

The author thanks Schuyler Rumsey Philatelic Auctions, Robert A. Siegel Auction Galleries, Jim Forte Postal History, and A. Garstka for the use of photos, the many genealogists who responded to email and message board queries, and Lisa Birsinger for database and website support.

About the Author

James R. (Jim) Miller is a genealogist and postal historian and is the founder of *Philgen.org*. He lives in Caroga Lake, New York and Hagenau, France, and can be contacted at jim@philgen.org.

Endnotes:

1. James R. Miller, “Philatelic Genealogy: Old Envelopes, Postcards, and Immigrant Origins,” *New England Ancestors* 10:2 (2009): 37–38 [viewable at <http://philgen.org>, click on NEA article in Main Menu], and “Philatelic Genealogy Update: An Initial Assessment of the Genealogical Value of Old Envelopes and Postcards,” *American Ancestors* 11:1 (2010): 45.
2. 1915 Iowa State Census, Clinton, Clinton County, Iowa, Card C301, Iowa State Historical Society, roll 110. Viewed on *Ancestry.com*.
3. S.S. *Furst Bismarck* passenger list, arriving New York, New York, 19 August 1905, line 8, NARA series T715, roll 614. Viewed on *Ancestry.com*.
4. 1910 U.S. census, Wheeler Township, Lyon County, Iowa, ED 62, p. 6A (written), NARA series T624, roll 406. Viewed on *Ancestry.com*.

5. U.S. passport application of George Diecke Damm, number 11010, Lyons County, Iowa, issued 23 June 1913, NARA series M1490. Viewed on *Ancestry.com*.
6. 1925 Iowa State Census, Davenport Ward 5, Scott County, Iowa, Iowa State Historical Society, roll 1937. Viewed on *Ancestry.com*.
7. Hohneke-Cannon Family tree, published on-line on *Ancestry.com*, owner's name shohneke; primary source citation not shown for birthplace of Ernst Christian Goenne, accessed 7 January 2010.
8. 1910 U.S. census, Monroe (crossed out), Fairview Township, Jasper County, Iowa, ED 23, p. 2A (written), NARA series T624, roll 407. Viewed on *Ancestry.com*.
9. 1915 Iowa State Census, Mason City, Lake Township, Cerro Gordo County, Iowa, Card 59, Iowa State Historical Society, roll 89. Viewed on *Ancestry.com*.
10. 1900 U.S. census, Burlington, Des Moines County, Iowa; Ward 2, ED 6, p. 4B (written); Ward 5, ED 12, p. 6A (written); Ward 6, ED 15, p. 24A (written); Ward 7, ED 17, p. 4A (written); and Ward 7, ED 17, p. 5B (written); NARA series T623, roll 429. Viewed on *Ancestry.com*.
11. Chas. I. Barker, compiler, *Directory of Burlington City [Iowa] 1890*, (no publisher, 1889), p. 17. Viewed on *Ancestry.com*.
12. Ora J. Gould, compiler, *Gould's City and Classified Business Directory of the City of Burlington [Iowa], 1900-1901*, (Ora J. Gould, publisher), pp. 58 and 406. Viewed on *Ancestry.com*.
13. 1900 U.S. census, Burlington Ward 5, Des Moines County, Iowa, ED 12, p. 6A (written), NARA series T623, roll 429. Viewed on *Ancestry.com*.
14. 1850 U.S. census, Farmington, Van Buren County, Iowa, p. 308 (printed, verso), NARA series M432, roll 189. Viewed on *Ancestry.com*.
15. Couture 3 Feb 2007 family tree, published on-line on *Ancestry.com*, owner's name kb9zm; primary source citation not shown for date and location of the Thomas Drummond-Dolly Lovern Rice marriage, accessed 4 January 2010.
16. Schuyler Rumsey Philatelic Auction catalog, Sale 31, Lot 111, 28-31 October 2008 (<http://www.rumseyauctions.com/cgi-local/viewlot.pl?site=1&sale=31&lot=111>, accessed 6 January 2010).
17. 1850 U.S. census, Marion, Henry County, Iowa, p. 223 (printed, recto), NARA series M432, roll 184. Viewed on *Ancestry.com*.
18. 1860 U.S. census, Fort Dodge, Webster County, Iowa, p. 5 (written), NARA series M653, roll 345. Viewed on *Ancestry.com*.
19. U.S. IRS Tax Assessment Lists, Arapahoe through Weld Counties, Colorado, 1865-1866, NARA series M757, roll 3. Viewed on *Ancestry.com*.
20. 1870 U.S. census, New Buda Township, Decatur County, Iowa, p. 8 (written), NARA series M593, roll 386. Viewed on *Ancestry.com*.
21. 1870 U.S. census, Blairstown, Florence Township, Benton County, Iowa, p. 15 (written), NARA series M593, roll 376. Viewed on *Ancestry.com*.
22. 1900 U.S. census, Pine City, Watkins County, Washington, ED 106, p. 12A (written), NARA series T623, roll 1,754. Viewed on *Ancestry.com*.
23. 1860 U.S. census, Winterset, Center Township, Madison County, Iowa, p. 157 (written), NARA series M653, roll 333. Viewed on *Ancestry.com*.
24. Adjutant General, *Roster and Record of Iowa Soldiers in the War of Rebellion* (Des Moines, 1910). Viewed on *Ancestry.com*.
25. Civil War Reference website, 4th Iowa Cavalry Regiment, History, Service (<http://www.civilwarreference.com/regiments/detail.php?regID=2176>, accessed 6 January 2010).
26. Adjutant General, *Roster and Record of Iowa Soldiers in the War of Rebellion* (Des Moines, 1910). Viewed on *Ancestry.com*.
27. Wikipedia, "John C. Frémont" (http://en.wikipedia.org/wiki/John_C._Fr%C3%A9mont, accessed 7 January 2010).
28. 1870 U.S. census, Union, Hardin County, Iowa, p. 5 (written), NARA series M593, roll 394. Viewed on *Ancestry.com*.
29. Wikipedia, "Abraham Lincoln" (http://en.wikipedia.org/wiki/Abraham_Lincoln, accessed 7 January 2010).

30. 1856 Iowa State Census, Marion, Union County, Iowa, pp. 880-881 (printed), Iowa State Historical Society, roll 61. Viewed on *Ancestry.com*.
31. 1885 Iowa State Census, Ida Grove, Ida County, Iowa, pp. 115 (printed, verso) and 116 (printed, recto), Iowa State Historical Society, roll 203. Viewed on *Ancestry.com*.
32. Schuyler Rumsey Philatelic Auction catalog, Sale 33, Lot 3349, 23-26 April 2009 (<http://www.rumseyauctions.com/cgi-local/viewchap.pl?site=1&sale=33&chapter=147&page=1>, accessed 1 January 2010).
33. 1860 U.S. census, Fort Madison, Lee County, Iowa, p. 47 (written), NARA series M653, roll 330. Viewed on *Ancestry.com*.
34. 1910 U.S. census, Villisca Ward 2, Jackson Township, Montgomery County, Iowa, ED 7, p. 3B (written), NARA series T624, roll 415. Viewed on *Ancestry.com*.
35. 1910 U.S. census, Nodaway, Adams County, Iowa, ED 108, p. 13B (written), NARA series T624, roll 390. Viewed on *Ancestry.com*.
36. Vernon S. Stroupe, "What is Postal History?," *North Carolina Postal Historian* (Spring 1995), excerpted at the National Postal Museum website (<http://www.postalmuseum.si.edu/statepostalhistory/studyofpostalsystem.html>, accessed 22 December 2009).
37. 1860 U.S. census, Burlington City, Des Moines County, Iowa, p. 73 (written), NARA series M653, roll 319. Viewed on *Ancestry.com*.
38. 1850 U.S. census, Yellow Spring, Des Moines County, Iowa, p. 388 (printed, verso), NARA series M432, roll 189. Viewed on *Ancestry.com*.

Iowa Pioneer, Century & Statehood Certificates

The **IOWA CERTIFICATE** project is available for anyone whose ancestor was in Iowa during specific time periods. Sources of proof can be census, county history, Bible record, land record, etc. The completed application and copies of proof are filed at the library for the patrons' use. Following are the certificates issued for xxxx

STATEHOOD CERTIFICATES

Direct ancestor was in Iowa by 1846.

CENTURY CERTIFICATES

Direct ancestor has been in Iowa for the last 100 or more years.

PIONEER CERTIFICATES

Direct ancestor was in Iowa in 1856 or before

APPLICATION FOR CERTIFICATES

The Iowa Genealogical Society issues certificates to persons who are directly descended from Iowa Pioneers. Applications must prove direct descent and prove that the ancestor settled in Iowa

- By 1846, to receive a **Statehood Certificate**;
- By 1856, to receive a **Pioneer Certificate**;
- More than 100 years prior to the date of application, for a **Century Certificate**.

Applicants may apply for certificates to be issued to themselves or to other persons. The person to whom the certificate is issued need not currently live in Iowa.

The purpose of the Certificate Program is to recognize families with Iowa roots, encourage people to undertake genealogical research, and to provide genealogical resources for researchers in our library.

The information and application are available at the library or by sending a self-addressed stamped envelope to IGS. You may also find the information and application on our website www.iowagenealogy.org/research_resources/index.htm. The cost is \$10.00 per certificate for members of IGS and \$10.00 for non-members. The certificate is suitable for framing.

United Spanish War Veterans

By Susan Claman

The Spanish-American War lasted less than a year from 21 April 1898 to 11 April 1899 although actual hostilities ceased on 13 August 1898. Fifty-seven thousand three hundred twenty nine (57,329) regular troops participated, 223,235 militia and volunteer troops and 31,959 Navy personnel (this number includes officers in the US Marine Corps but not officers in the US Navy proper) for a total of 312,523. Soon after the men returned home they began to form veterans' organizations. Originally there were several organizations. In 1904 three of the most prominent merged into a single organization known as the United Spanish War Veterans (USWV).

The TAPS form included the name of camp, camp number, department of (state), file date, name and highest rank in USWV, US Service (highest rank), Co, ship/regt, married or single, number and age of children, place of birth, place of death, date of death, buried in <blank> cemetery at <blank> with military honors, grave in charge of and camp number.

The following is a partial index of the death records we have at the IGS library. All information is transcribed as written on the form. To obtain a copy of the one record (1 sheet, two sides) send a request to IGS. The cost is \$5.00 for members or \$7.50 for non-members plus \$1.00 for postage and handling.

Iowa Genealogical Society
Spanish American War Records
628 East Grand Avenue
Des Moines IA 50309-1924

Index of TAPS Forms A & B are in November, 2008 issue.
Index of TAPS Forms C, D & E are in Spring, 2009 issue.
Index of TAPS Forms F, G, & H are in Winter, 2009 issue.

Index of Taps Forms

Last Name	First Name	DOB	POB	DOD	POD
Inman	Roy G	11/24/1874	Iowa	1/30/1949	Cottonwood, Ariz
Inskip	Joseph		Ill	7/24/1937	Council Bluffs, Ia
Imholtz	Joseph F	May 7, 1875	Iowa	11/17/1958	Los Angeles, Calif
Irvine	Wm Swift		Sioux City, Ia	11/21/1943	Sioux City, Ia
Irwin	John T			2/18/1938	Ft Miley, Calif
Isbell	Charles I	March 5, 1873	Montour, Iowa	4/24/1953	Vinton, Iowa
Iseberg	Ole	May 9, 1874		8/17/1900	
Ishmael	Geo W	age 24 at enlist	St Paul, Min time of enlist	2/17/1952	prob Sheboygan, Mich
Jackson	Douglas Velie		not known	7/11/1947	Muscatine, Iowa
Jackson	Oliver P	2/20/1877	Dover, Mo	11/1 or 11/18/1921	drowning probable Des Moines
Jackson	Warren Anson	March 30, 1871	Tama Co, Iowa	4/12/1957	Marshalltown, Iowa
Jackson	William	May 14, 1878	Kellerton, Iowa	5/7/1951	Kellerton, Iowa
Jacobs	Art	January 3, 1882	Davenport, Iowa	2/12/1965	Soldiers Home, Marshalltown, Iowa
Jacobs	S N	1872	Holland	4/7/1947	Keokuk, Iowa
Jacobs	Charles	3/6/1878	Humphreys, Mo	8/2/1934	Mason City, Ia
Jacobson	Con A	7/12/1875	Maleno, Sweden	12/12/1943	Marshalltown, Iowa

Last Name	First Name	DOB	POB	DOD	POD
Jacobson	Carl C		Denmark	11/24/1946	Cedar Rapids, Iowa
Jacobson	Edward	Sept 16, 1876	Norway	7/12/1949	V A Hospital, Des Moines
Jacobson	Harold	12/30/1885	Germany	1/22/1977	Colorado Springs
Jaeggi	Albert M	5/30/1856	Dubuque, Ia	2/10/1933	Dubuque
James	Charles W	age 34 at enlist	Ohio	3/14/1944	Hines Hospital
Jairl	James	2/17/1878	Alexandria, Mo	3/5/1949	St Josephs Hospital, Keokuk, Iowa
James	Jessie T	Jan 11, 1861	Ohio	2/11/1911	Corning
James	Morgan Newton	4/12/1875	Greenburg, Indiana	11/22/1952	Burlington, Ia
Jamison	Samuel M	age 22 at enlist		12/2/1941	Los Angeles
Janda	Joseph F		Cedar Rapids, Ia	2/3/1942	Cedar Rapids, Iowa
Jandera	Bedrich O		Czechoslovakia	6/6/1953	Cedar Rapids, Iowa
Janka	Joseph		Praha, Bohemia	4/12/1947	West Highland, Calif
Jappy	Oscar W	age 21 at enlist	Sweeden	5/15/1938	Fresno, Calif
Jarboe	James Lee		Columbus Jct. Iowa	4/10/1946	Cedar Rapids, Iowa
Jarchow	Edward H	October 3, 1883	Dixon, Iowa	8/15/1952	Davenport, Iowa
Jenkins	Harry David	Dec 7, 1859	Minnesota	1/11/1932	Des Moines
Jenks	Charles F	age 23 at enlist	Iowa	5/5/1955	V A Sawtell, Calif
Jenks	Guy P	age 19 at enlist		12/3/1950	Naval Hosp, San Diego, Calif
Jensen	Otto	age 77	Denmark	12/24/1953	Nursing Home D M
Jerde	Jacob N	Jan 15, 1880	Minnesota	4/8/1951	Stevens, So. Dakota
Jewell	John E	Sept 14, 1875	Marshall, Mo	5/17/1951	Veterans Adm. Hospital, Lincoln, Neb
Jobe	Harry	age 21 at enlist		1/4/1955	St Louis, Mo
Johnson	Amel G	June 29, 1874	Sweden	1/1/1949	Marshalltown, Iowa
Johnson	Andrew N	Jun 20, 1876	Rockwell, Ia	6/25/1950	Mason City, Ia
Johnson	Axel	April 25, 1873	Rantoul, Ill	11/22/1962	Humboldt, Iowa
Johnson	Benj B	age 21 at enlist	Iowa	12/25/1955	Vets Hosp, Oakland, Cal
Johnson	Charles A	July [?] 1876	Falun, Sweden	10/28/1956	Sioux City
Johnson	Chas G	age 25 at enlist	Sweeden	3/18/1951	San Diego, Calif
Johnson	Christian K	6/17/1878	Webster City	3/26/1931	Cherokee, Ia paralysis
Johnson	Frank R		Iowa	8/6/1962	Peoria, Illinois
Johnson	Elmer A	Nov 29, 1871	Warnerville, Wis	10/21/1955	Cedar Rapids, Iowa
Johnson	Elza C	1873	Maquoketa, Ia	4/14/1942	Washington, DC
Johnson	Hans P		Denmark	8/3/1946	Waterloo
Johnson	Henry		Cherokee, Ia	10/24/1941	Veterans Hospital, Des Moines, Ia
Johnson	Homer M	June 19, 1879	Union County, Iowa	9/30/1948	Oskaloosa, Iowa
Johnson	J A		Philidoflea, Pa	10/2/1942	Vets. Adm. Des Moines, Ia
Johnson	James E			4/19/1947	New Castle, Neb
Johnson	Jens	Dec 26, 1868	Bergan, Norway	8/13/1951	Ft. Dodge, Ia
Johnson	Joab	10/15/1869	Bland, Mo	8/29/1956	Des Moines at home
Johnson	John	November 3, 1867	Sweden	10/30/1957	Veterans Hospital, Iowa City, Ia

Last Name	First Name	DOB	POB	DOD	POD
Johnson	John A	1876	Smallwood, Sweeden	12/4/1952	Pomeroy, Iowa
Johnson	John B	June 30, 1881	Sweden	4/15/1960	V A Hospital, Omaha, Neb
Johnson	John C G	May 14, 1874	Kasson, Neb	1/12/1949	Davenport, Iowa
Johnson	John E	1869	Millersburg, Ia	6/21/1943	US Veterans, Des Moines
Johnson	John M			11/7/1959	V A H, Wadsworth, Kans
Johnson	John M	29 Aug 1874	Egerton, Kansas	10/21/1958	V A Des Moines, Ia
Johnson	John Thomas	8/1/1880	Ottumwa, Ia	9/1/1953	St. Francis Hosp, Waterloo, Ia
Johnson	Karl A	Oct 19, 1874		4/14/1953	
Johnson	Neal	5/18/1873	Gilbert City, Iowa	12/16/1951	Sioux Rapids, Ia
Johnson	Peter J	Sept 7, 1876	Sweden	2/21/1958	Fairfield, Iowa
Johnson	Theodore	5/16/1865	Germany	4/16/1951	Winfield, Ia
Johnson	Ward Phillip	June 13, 1879	Jefferson City, MO	1/21/1961	Grinnell, Iowa
Johnson	William E		Illinois	9/25/1935	Leavenworth Kans. Soldier Home
Johnson	Wm L (negro)	12/10/1880		12/23/1951	
Johnston	George D	3/12/1856	Fort Madison, Ia	10/4/1939	Burlington, Ia
Johnston	Robert E	age 26 at enlist	Toledo, Iowa	12/28/1944	Cedar Rapids, Iowa
Jones	Dr. Charles W	age 25 at enlist	Kansas	1/28/1952	Olathe, Kan
Jones	Elmer B	age 24 at enlist	Iowa	2/8/1948	Corona Naval Hosp, Calif
Jones	Frank E	age 24 at enlist	Unionville, Mo	7/13/1956	V A Lawrence, Kansas
Jones	Frank	June 3, 1860	Henry Co, Iowa	12/24/1936	I. S. H. Hospital
Jones	Fred K	10/4/1876	Corning, Ia	3/3/1929	
Jones	Grant R	1875	Lisbon, Ill	3/4/1943	Veterans Hospital, Des Moines
Jones	Jessie P	12/18/1876	New Frankport, Mo	9/15/1947	Veterans Hospital
Jones	John	age 26 at enlist	Washington Co, Iowa	11/8/1939	farm north of Ainsworth
Jones	Kirby	1865		7/25/1958	Sioux City, Iowa
Jones	Luther A		Tuscola Co, Mich	8/20/1935	Mason City, Ia
Jones	Owen H		Beacon, Iowa	7/18/1947	Oskaloosa, Iowa
Jones	M Scott		Waukon, Iowa	2/21/1939	Waukon, Iowa
Jones	Walter Thomas	age 21 at enlist	Iowa	5/15/1954	Salt Lake City, Utah
Joseph	Chas	Aug 15, 1875	Co Bluffs, Iowa	7/15/1960	Vets Hospital, Omaha, neb
Joy	Louis H	age 24 at enlist	Iowa	1/20/1939	Costa Mesa, Cali
Judd	Charles	8/12/1869 age 86	Morrison, Ill	4/24/1956	V A Iowa City
Jungk	Carl J	Aug 25, 1877	Dubuque	11/6/1974	Mercy Hospital
Jurinec	Frank		Bohemia	3/30/1941	Cedar Rapids, Iowa

Naturalizations - First Papers

The Iowa Genealogical Society received a number of naturalization documents from the district court files in Polk County. Volunteer members scanned the documents and, when the ink was faded, transcribed the information. Great care was taken to assure each name was correct with the coordinating scan. The documents were then indexed for easy use.

The images for the names on this page are available to IGS members for \$5.00 or to non-members for \$7.50 per sheet (front and back are two sheets) plus \$2.50 postage and handling. Write to IGS (see page 1 for the address) with the requested names. The front side, back side and transcription for an individual all are included in the mailing.

The indexing of the naturalization images used the following guidelines.

- If there was more than one date on a document, the earliest date was used in the name. The dating system of "year-month-day" was used.
- If the immigrant's signature was legible, his spelling was used for the name.
- If the name was difficult to decipher, other volunteers were consulted. Census indexes, city directories and Ancestry.com were also used to determine the name.
- In the rare instance of not being able to decipher a given name, the symbol ^^^ is used with the first initial of the name.
- There are a few documents in which the immigrant wrote his first name and the clerk wrote a different/similar name; i.e. Johannes vs. Jonathan or Charles vs. Carl. In these cases, the immigrant's signature was used as the name with the clerk's interpretation in parentheses.
- If the document originated in another county, the document was filed in Polk County Iowa.
- Even though the document was larger than 8x11 inches, the information on the back side may not have been that large. So the back side was usually scanned at the 8x11 size. No information was omitted to do this.
- Depending on the original paper size, the document was bi-folded or tri-folded to about 3x8 inch size. The name was written by the court clerk across one end for filing. This resulted in the "back side" of the document.
- There were some documents where the name on the back side did not agree with the name on the actual document. (Sometimes this is the name of the court clerk, which is the first name appearing on the document).

Index of A and B are in November, 2008, Volume 42, Issue 2

Index of Naturalization Papers

Cairns, James 1871-03-11 [Scotland] Polk Co. IA (back side)
Cairns, James 1871-03-11 [Scotland] Polk Co. IA (front side)
Cairns, Robert 1863-09-01 [Scotland] Polk Co. IA (back side)
Cairns, Robert 1863-09-01 [Scotland] Polk Co. IA (front side)
Cairns, William 1871-03-11 [Scotland] Polk Co. IA (back side)
Cairns, William 1871-03-11 [Scotland] Polk Co. IA (front side)
Callaghan, Owen 1869-09-22 [Ireland] Polk Co. IA (back side)
Callaghan, Owen 1869-09-22 [Ireland] Polk Co. IA (front side)
Callinson, C. 1874-09-11 [Sweden] Polk Co. IA (back side)
Callinson, C. 1874-09-11 [Sweden] Polk Co. IA (front side)

Calonge, Frank 1875-05-08 [Algeria] Polk Co. IA (back side)
Calonge, Frank 1875-05-08 [Algeria] Polk Co. IA (front side)
Carlberg, Andrew G. 1878-04-11 [Sweden] Wilmington, DEL (back side)
Carlberg, Andrew G. 1878-04-11 [Sweden] Wilmington, DEL (front side)
Carless, Charles 1879-01-03 [England] Polk Co. IA (back side)
Carless, Charles 1879-01-03 [England] Polk Co. IA (front side)
Carlson, A. A. 1871-06-19 [Sweden] Polk Co. IA (back side)
Carlson, A. A. 1871-06-19 [Sweden] Polk Co. IA (front side)
Carlson, Andrew J. 1873-10-04 [Sweden] Polk Co. IA (back side)
Carlson, Andrew J. 1873-10-04 [Sweden] Polk Co. IA (front side)
Carlson, C. A. 1875-04-17 [Sweden] Polk Co. IA (back side)
Carlson, C. A. 1875-04-17 [Sweden] Polk Co. IA (front side)
Carlson, Carl Emil 1884-12-16 [Sweden] Webster Co. IA (back side)
Carlson, Carl Emil 1884-12-16 [Sweden] Webster Co. IA (front side)
Carlson, Charles J. 1874-10-03 [Sweden] Polk Co. IA (back side)
Carlson, Charles J. 1874-10-03 [Sweden] Polk Co. IA (front side)
Carlson, J. A. 1874-09-19 [Sweden] Polk Co. IA (back side)
Carlson, J. A. 1874-09-19 [Sweden] Polk Co. IA (front side)
Carlson, J. P. 1874-09-10 [Sweden] Polk Co. IA (back side)
Carlson, J. P. 1874-09-10 [Sweden] Polk Co. IA (front side)
Carlson, John 1871-06-19 [Sweden] Polk Co. IA (back side)
Carlson, John 1871-06-19 [Sweden] Polk Co. IA (front side)
Carlson, John 1886-10-12 [Sweden] Polk Co. IA (back side)
Carlson, John 1886-10-12 [Sweden] Polk Co. IA (front side)
Carlson, Swan 1886-06-21 [Sweden] Polk Co. IA (back side)
Carlson, Swan 1886-06-21 [Sweden] Polk Co. IA (front side)
Carney, Hugh 1868-03-02 [Scotland] Polk Co. IA (front side)
Carney, Hugh 1869-03-02 [Scotland] Polk Co. IA (back side)
Carnnitzer, Morris 1876-09-18 [Germany] Johnson Co. KS (back side)
Carnnitzer, Morris 1876-09-18 [Germany] Johnson Co. KS (front side)
Carr, Darby 1854-11-13 [Ireland] Polk Co. IA (back side)
Carr, Darby 1854-11-13 [Ireland] Polk Co. IA (front side)
Cartwright, Henry 1858-12-10 [Great Britain] Warren Co. IA (back side)
Cartwright, Henry 1858-12-10 [Great Britain] Warren Co. IA (front side)
Cassidy, Francis 1854-10-04 [Great Britain] New York Co. NY (back side)
Cassidy, Francis 1854-10-04 [Great Britain] New York Co. NY (front side)
Cassidy, John 1855-10-24 [Ireland] Polk Co. IA (back side)
Cassidy, John 1855-10-24 [Ireland] Polk Co. IA (front side)
Castelo, John 1857-06-12 [Ireland] Polk Co. IA (back side)
Castelo, John 1857-06-12 [Ireland] Polk Co. IA (front side)
Castelo, John 1859-06-11 [Ireland] Polk Co. IA (back side)
Castelo, John 1859-06-11 [Ireland] Polk Co. IA (front side)
Castigan, Daniel 1851-02-09 [Ireland] Logan Co. OHIO (one side only)
Castle, Joseph 1853-05-03 [Prussia] Polk Co. IA (back side)
Castle, Joseph 1853-05-03 [Prussia] Polk Co. IA (front side)
Castle, Moses 1884-09-30 [Poland] Polk Co. IA (back side)
Castle, Moses 1884-09-30 [Poland] Polk Co. IA (front side)
Cate, Charles 1856-09-17 [England] Polk Co. IA (1st papers-back side)

Cate, Charles 1856-09-17 [England] Polk Co. IA (1st papers-front side)
Cate, Charles 1856-09-17 [England] Polk Co. IA (oath-back side)
Cate, Charles 1856-09-17 [England] Polk Co. IA (oath-front side)
Cate, Charles 1859 [England] Polk Co. IA (back side)
Cate, Charles 1859 [England] Polk Co. IA (front side)
Cate, Charles 1859 [England] Polk Co. IA (transcription c.1983)
Cate, Lester 1860-05-14 [England] Polk Co. IA (back side)
Cate, Lester 1860-05-14 [England] Polk Co. IA (front side)
Caulfield, Thomas 1880-09-20 [Ireland] Polk Co. IA (back side)
Caulfield, Thomas 1880-09-20 [Ireland] Polk Co. IA (front side)
Cavanaugh, William 1856-08-04 [Ireland] Dubuque Co. IA (back side)
Cavanaugh, William 1856-08-04 [Ireland] Dubuque Co. IA (front side)
Chalstrom, John 1873-09-08 [Sweden] Polk Co. IA (back side)
Chalstrom, John 1873-09-08 [Sweden] Polk Co. IA (front side)
Chambers, Edward 1856-08-13 [Ireland] Polk Co. IA (back side)
Chambers, Edward 1856-08-13 [Ireland] Polk Co. IA (front side)
Chambers, Thomas 1874-04-25 [England] Wapello Co. IA (back side)
Chambers, Thomas 1874-04-25 [England] Wapello Co. IA (front side)
Chandler, Henry 1863-06-22 [England] Polk Co. IA (back side)
Chandler, Henry 1863-06-22 [England] Polk Co. IA (front side)
Chantler, James 1857-12-10 [England] Polk Co. IA (back side)
Chantler, James 1857-12-10 [England] Polk Co. IA (front side)
Charelson, Osmun 1864-09-02 [Norway] Polk Co. IA (front side)
Charelson, Osmun 1867-09-02 [Norway] Polk c
Charlson, Stone 1859-10-08 [Norway] Polk Co. IA (back side)
Charlson, Stone 1859-10-08 [Norway] Polk Co. IA (front side)
Chatelain, George Maxim Victor 1886-09-11 [France] Polk Co. IA (back side)
Chatelain, George Maxim Victor 1886-09-11 [France] Polk Co. IA (front side)
Chelswig, Engbregh 1860-04-21 [Norway] Polk Co. IA (back side)
Chelswig, Engbregh 1860-04-21 [Norway] Polk Co. IA (front side)
Christensen, Andrew 1871-11-17 [Denmark] Polk Co. IA (1st papers-back side)
Christensen, Andrew 1871-11-17 [Denmark] Polk Co. IA (1st papers-front side)
Christensen, Andrew 1871-11-17 [Denmark] Polk Co. IA (oath-back side)
Christensen, Andrew 1871-11-17 [Denmark] Polk Co. IA (oath-front side)
Christensen, Hans Christian 1876-11-24 [Denmark] Polk Co. IA (back side)
Christensen, Hans Christian 1876-11-24 [Denmark] Polk Co. IA (front side)
Christenson, James 1876-04-01 [Denmark] Monroe Co. IA (back side)
Christenson, James 1876-04-01 [Denmark] Monroe Co. IA (front side)
Christenson, Johann 1877-09-15 [Denmark-Schleswig Holstein] Polk Co. IA (back side)
Christenson, Johann 1877-09-15 [Denmark-Schleswig Holstein] Polk Co. IA (front side)
Christofferson, Andrew 1868-12-05 [Norway] Polk Co. IA (back side)
Christofferson, Andrew 1868-12-05 [Norway] Polk Co. IA (front side)
Christopherson, Michael C. 1871-07-08 [Norway] Polk Co. IA (back side)
Christopherson, Michael C. 1871-07-08 [Norway] Polk Co. IA (front side)
Chulstrom, C. 1871-06-19 [Sweden] Polk Co. IA (back side)
Chulstrum, C. 1871-06-19 [Sweden] Polk Co. IA (front side)
Clancy, Michael 1874-12-09 [Ireland] Polk Co. IA (back side)
Clancy, Michael 1874-12-09 [Ireland] Polk Co. IA (front side)

Clark, John 1878-10-12 [Great Britain] Rock Island Co. ILL (front side)
Clark, John 1878-10-12 [Great Britain] Rock Island ILL (back side)
Clark, William 1871-07-05 [Scotland] Fayette Co. IA (back side)
Clark, William 1871-07-05 [Scotland] Fayette Co. IA (front side)
Cleal, Charles 1877-10-08 [England] Polk Co. IA (back side)
Cleal, Charles 1877-10-08 [England] Polk Co. IA (front side)
Clegg, William 1873-05-15 [England] Polk Co. IA (back side)
Clegg, William 1873-05-15 [England] Polk Co. IA (front side)
Clelland, Thomas 1856-11-01 [Scotland] Walworth Co. WIS (front side only)
Cler, Melchior 1882-02-07 [Lorraine Germany] Dallas Co. IA (back side)
Cler, Melchior 1882-02-07 [Lorraine Germany] Dallas Co. IA (front side)
Clinton, Michael 1877-02-14 [Ireland] Polk Co. IA (back side)
Clinton, Michael 1877-02-14 [Ireland] Polk Co. IA (front side)
Coffey, Owen 1870-05-18 [Ireland] Polk Co. IA (back side)
Coffey, Owen 1870-05-18 [Ireland] Polk Co. IA (front side)
Cohen, A. L. 1884-09-17 [Russia] Polk Co. IA (back side)
Cohen, A. L. 1884-09-17 [Russia] Polk Co. IA (front side)
Cohen, Abraham 1884-10-04 [Russia Poland] Polk Co. IA (back side)
Cohen, Abraham 1884-10-04 [Russia Poland] Polk Co. IA (front side)
Cohen, B. 1877-02-26 [Russia] Polk Co. (back side)
Cohen, B. 1877-02-26 [Russia] Polk Co. IA (front side)
Cohen, Julius R. 1884-10-04 [Russia] Polk Co. IA (back side)
Cohen, Julius R. 1884-10-04 [Russia] Polk Co. IA (front side)
Cohen, M. 1871-01-04 [Poland] Polk Co. IA (back side)
Cohen, M. 1871-01-04 [Poland] Polk Co. IA (front side)
Cohen, Solomon 1875-09-04 [England] Polk Co. IA (back side)
Cohen, Solomon 1875-09-04 [England] Polk Co. IA (front side)
Collard, William 1868-02-29 [England] Polk Co. IA (back side)
Collard, William 1868-02-29 [England] Polk Co. IA (front side)
Collins, John 1877-09-27 [Ireland] Polk Co. IA (back side)
Collins, John 1877-09-27 [Ireland] Polk Co. IA (front side)
Collinson, Andrew J. 1877-02-21 [Sweden] Polk Co. IA (back side)
Collinson, Andrew J. 1877-02-21 [Sweden] Polk Co. IA (front side)
Connaly, Andrew 1872-11-08 [Ireland] Polk Co. IA (back side)
Connaly, Andrew 1872-11-08 [Ireland] Polk Co. IA (front side)
Connart, Isaac 1876-11-01 [Germany] Polk Co. IA (back side)
Connart, Isaac 1876-11-01 [Germany] Polk Co. IA (front side)
Connelly, John 1882-06-26 [Ireland] Polk Co. IA (back side)
Connelly, John 1882-06-26 [Ireland] Polk Co. IA (front side)
Connory, Michael 1874-03-13 [Ireland] Polk Co. IA (back side)
Connory, Michael 1874-03-13 [Ireland] Polk Co. IA (front side)
Conrad, Moritz 1874-01-01 [Prussia] Polk Co. IA (back side)
Conrad, Moritz 1874-01-01 [Prussia] Polk Co. IA (front side)
Conradi, George 1875-10-09 [Germany] Polk Co. IA (back side)
Conradi, George 1875-10-09 [Germany] Polk Co. IA (front side)
Conradi, Philip 1874-10-05 [Germany] Polk Co. IA (back side)
Conradi, Philip 1874-10-05 [Germany] Polk Co. IA (front side)
Conroy, Michael 1857-03-17 [Great Britain] Genesee Co. NY (back side)

Conroy, Michael 1857-03-17 [Great Britain] Genesee Co. NY (front side)
Cook, Allen C. 1884-11-03 [Canada] Polk Co. IA (back side)
Cook, Allen C. 1884-11-03 [Canada] Polk Co. IA (front side)
Cope, Walter John 1868-02-17 [England] Polk Co. IA (back side)
Cope, Walter John 1868-02-17 [England] Polk Co. IA (front side)
Corridan, John 1870-03-26 [Ireland] Polk Co. IA (back side)
Corridan, John 1870-03-26 [Ireland] Polk Co. IA (front side)
Cosgriff, John 1856-05-29 [Ireland] Polk Co. IA (back side)
Cosgriff, John 1856-05-29 [Ireland] Polk Co. IA (front side)
Costigan, David 1853-09-02 [Ireland] Logan Co. OHIO (back side)
Costigan, David 1853-09-02 [Ireland] Logan Co. OHIO (front side)
Costigan, David 1853-09-02 [Ireland] Polk Co. IA (transcription c.1983)
Cote, Charles 1859-03-25 [England] Polk Co. IA (one side only)
Cotter, William 1854-06-13 [Great Britain] Umpqua Co. OREGON (back side)
Cotter, William 1854-06-13 [Great Britain] Umpqua Co. OREGON (front side)
Cottin, S. 1877-03-05 [France] Polk Co. IA (back side)
Cottin, S. 1877-03-05 [France] Polk Co. IA (front side)
Cottin, S. 1879-03-08 [France] Polk Co. IA (back side)
Cottin, S. 1879-03-08 [France] Polk Co. IA (front side)
Crolley, John 1854-11-23 [Great Britain] New York Co. NY (back side)
Crolley, John 1854-11-23 [Great Britain] New York Co. NY (front side)
Cronan, Timothy 1870-12-22 [Ireland] Polk Co. IA (back side)
Cronan, Timothy 1870-12-22 [Ireland] Polk Co. IA (front side)
Cross, Joseph 1882-03-04 [Wales] Polk Co. IA (back side)
Cross, Joseph 1882-03-04 [Wales] Polk Co. IA (front side)
Crowley, C. W. 1873-01-25 [Ireland] Polk Co. IA (back side)
Crowley, C. W. 1873-01-25 [Ireland] Polk Co. IA (front side)
Crowley, Robert 1856-12-29 [Ireland] Polk Co. IA (back side)
Crowley, Robert 1856-12-29 [Ireland] Polk Co. IA (front side)
Crowley, Robert 1856-12-29 [Ireland] Polk Co. IA (oath-back side)
Crowley, Robert 1856-12-29 [Ireland] Polk Co. IA (oath-front side)
Crowley, Timothy 1872-01-13 [Ireland] Polk Co. IA (back side)
Crowley, Timothy 1872-01-13 [Ireland] Polk Co. IA (front side)
Crowly, Patrick 1876-12-27 [Ireland] Polk Co. IA (back side)
Crowly, Patrick 1876-12-27 [Ireland] Polk Co. IA (front side)
Cummings, William 1869-04-12 [Ireland] Polk Co. IA (back side)
Cummings, William 1869-04-12 [Ireland] Polk Co. IA (front side)
Cunnington, Joseph 1870-03-03 [England] Polk Co. IA (back side)
Cunnington, Joseph 1870-03-03 [England] Polk Co. IA (front side)
Cushing, James H. 1884-10-31 [Ireland] Polk Co. IA (back side)
Cushing, James H. 1884-10-31 [Ireland] Polk Co. IA (front side)
Cuthbert, Alexander R. 1877-10-03 [Scotland] Polk Co. IA (back side)
Cuthbert, Alexander R. 1877-10-03 [Scotland] Polk Co. IA (front side)

Library Acquisitions

The following acquisitions were added to our shelves August through December 2009. Please refer to the card catalog at the library or on our website for a complete listing. Research services are available from the library; refer to page 3 for information.

Call Number	Author	Title
289.6/FRI	no author	Friends Directory, 1996...and Resource Guide
284.5/BAI	Baird, Charles W.	History of the Huguenot Emigration to America
325.1/COA	Coan, Peter Morton	Ellis Island Interviews: Immigrants Tell Their Stories in Their Own Words
912.19/HAM	no author	Hammond Explorer Atlas of the World
929.1/REI	Reid, Judith P.	Family Ties in England, Scotland, Wales, and Ireland, Sources for Genealogical Research
929.2/BUR	Harrison, Francies Burton	Burton Chronicles of Colonial Virginia. . . With Special Reference to the Ancestry of Jesse Burton of Lynchburg (1750?-1795)
929.2/DAR	Smith, H. C.	The Darnall, Darnell Family with Allied Families, Volume 1
929.2/ECK	Johns, Lizzie H.	Records of the Eckley Family in America
929.2/FOR	Dennis, Gerneva Foster	Forster, Foster and Their Royal Descendants of England 823 AD; Virginia 1635 AD; USA 1990 AD
929.2/JEN	Jennings, Eileen (Stockman)	The Jennings Family, Descendants of David Jennings
929.2/MAX	Maxwell, Fay	Maxwell History and Genealogy and Maxwell Families of Ohio
929.2/McM	Carter, Dorothy	Thomas and Deborah McMillan Family, 1706-1977
929.2/REA	Kantorowicz, Mildred Reams	Reams Family Genealogy, 1650-1987
929.2/REA	Mohler, Barbara LeGate	Reames-Brown Descendants, 1650-1983
929.2/REA	Ream, Forest V.	Some Early Ream and Allied Families
929.2/WIL	Donnelly, Mary Louise	Edward Willett, Colonial Maryland Pewterer, County Clerk, Plantation Owner, His Ancestors and Descendants
929.2/WRI	Steiner, Myrtle Viola Sears	Descendants of Capt. Richard Wright, From the Eastern Shore of Virginia to the Pacific Coast of California, 1656-1966
929.3/WOR	no author	World Book of Fosters
943/HAN	Hansen, Kevan M.	Map Guide to German Parish Registers, Kingdom of Saxony I, Kreishauptmannschafter, Leipzig, and Zwickau, Volume 25
943/HAN	Hansen, Kevan M.	Map Guide to German Parish Registers, Kingdom of Saxony II; Kreishauptmannschafter, Bautzen, Chemnitz and Dresden, Volume 26
973.2/SEC	no author	Second Boat, Volumes 1-2: A Bound Set of Periodicals, 1980-81
973.2/SEC	no author	Second Boat, Volumes 3-4: A Bound Set of Periodicals, 1982-83
973.2/SEC	no author	Second Boat, Volumes 5-6: A Bound Set of Periodicals, 1984-85

Call Number	Author	Title
973.2/SEC	no author	Second Boat, Volumes 7-8: A Bound Set of Periodicals, 1986-87
973.76/SOL	no author	Soldiers' National Cemetery, Gettysburg
973.772/CON	no author	Confederate Soldiers, Sailors and Civilians Who Died as Prisoners of War at Camp Douglas, Chicago, Illinois, 1862-1865
973.772/PRA	Praus, Alexis A.	Confederate Soldiers and Sailors Who Died as Prisoners of War at Camp Butler, Illinois, 1862-1865
974.4/FLA	Flagg, Charles A.	An Index of Pioneers from Massachusetts to the West, Especially the State of Michigan
974.485/ARN	Arnold, James N.	Vital Records of Rehoboth, 1642-1896, Part I
974.6/BAI	Bailey, Frederick W.	Early Connecticut Marriage, As Found on Ancient Church Records Prior to 1800
974.726/CLU	Clute, J.J.	Annals of Staten Island, From Its Discovery to the Present Time
974.76/CEN	Central New York Gen. Society	Six Generation Ancestor Tables, Bicentennial Project, Book Four, 1977
975.1/FER	Ferris, Benjamin	A History of the Original Settlements on the Delaware and a History of Wilmington
975.5/GEN/Vol. I	no author	Genealogies of Virginia Families from the William and Mary College Quarterly Historical Magazine, Volume I
975.5/GEN/Vol. II	no author	Genealogies of Virginia Families from the William and Mary College Quarterly Historical Magazine, Volume II
975.5/GEN/Vol. III	no author	Genealogies of Virginia Families from the William and Mary College Quarterly Historical Magazine, Volume III
975.5/GEN/Vol. IV	no author	Genealogies of Virginia Families from the William and Mary College Quarterly Historical Magazine, Volume IV
975.5/GEN/Vol. V	no author	Genealogies of Virginia Families from the William and Mary College Quarterly Historical Magazine, Volume V
975.533/MAR	no author	Marriages of Middlesex County, Virginia, 1740-1852
975.5634/WIL	Williams, Kathleen Booth	Marriages of Amelia County, Virginia, 1735-1815
975.632/HOL	Holcomb, Brent H.	Bladen County, North Carolina, Abstracts of Early Deeds, 1738-1804
975.641/ROS	Ross, Elizabeth E.	Family Bible Records of Johnston County, [North Carolina], Volume I
975.641/ROS	Ross, Elizabeth E.	Family Bible Records of Johnston County, [North Carolina], Volume II
975.641/ROS	Ross, Elizabeth E.	Johnston County, North Carolina Will Abstracts, 1746-1825, Volume I
975.641/ROS	Ross, Elizabeth E.	Johnston County, North Carolina Will Abstracts, 1825-1870, Volume II
975.649/HOF	Hofmann, Margaret M.	Northampton County, North Carolina, 1759-1808, Genealogical Abstracts of Wills
975.665/ABS	Absher, Mrs. W. O.	Surry County, North Carolina Abstracts Deed Books A, B and C (1770-1788)
975.6782/BYN	Bynum, Curtis	Marriage Bonds of Tryon and Lincoln Counties, North

Call Number	Author	Title
		Carolina
975.6782/HOL	Holcomb, Brent	Deed Abstracts of Tryon, Lincoln and Rutherford Counties North Carolina, 1769-1786 and Tryon County Wills and Estates
975.8/AUS	Austin, Jeannette Holland	The Georgians, Genealogies of Pioneer Settlers
976.9293/BIG	Biggs, Nina Mitchell	History of Greenup County, Kentucky, 1951
976.9295/LEW	no author	Lewis County, Kentucky, Federal Census, 1900
976.9295/LEW	no author	Federal Census of Lewis County, Kentucky, 1910
976.9295/LEW	Lewis Co. [KY] Hist. Society	Marriage Record, 1806-1851
976.9295/LEW	Lewis Co. [KY] Hist. Society	Marriage Book, 1900-1962, Book 1, A-B
976.9295/LEW	Lewis Co. [KY] Hist. Society	Marriage Book, 1900-1962, Book 2, C-D
976.9295/LEW	Lewis Co. [KY] Hist. Society	Marriage Book, 1900-1962, Book 3, E-F-G-J
976.9295/LEW	Lewis Co. [KY] Hist. Society	Marriage Book, 1900-1962, Book 4, H-K
976.9295/LEW	Lewis Co. [KY] Hist. Society	Marriage Book, 1900-1962, Book 5, L-P-Q-Y-Z
976.9295/LEW	Lewis Co. [KY] Hist. Society	Marriage Book, 1900-1962, Book 6, R-V-W
976.9295/LEW	Lewis Co. [KY] Hist. Society	Marriage Book, 1900-1962, Book 7, M-N-O
976.9295/LEW	Lewis Co. [KY] Hist. Society	Marriage Book, 1900-1962, Book 8, S-T
976.9295/LEW	Lewis Co. [KY] Hist. Society	Lewis County, Kentucky, Federal Census, 1860
976.9295/LEW	Lewis Co. [KY] Hist. Society	Lewis County, Kentucky, Federal Census, 1920, Book 1
976.9295/LEW	Lewis Co. [KY] Hist. Society	Lewis County, Kentucky, Federal Census, 1920, Book 2
976.9295/LEW	Lewis Co. [KY] Hist. Society	Lewis County, Kentucky, Federal Census, 1920, Book 3
976.9295/LEW	Lewis Co. [KY] Hist. Society	Lewis County, Kentucky, Federal Census, 1920, Book 4
976.9295/LEW	Lewis Co. [KY] Hist. Society	Lewis County, Kentucky, Federal Census, 1920, Book 5
976.9295/LEW	Lewis Co. [KY] Hist. Society	Lewis County, Kentucky, Federal Census, 1880
976.9295/MAR	no author	Marriage Record, 1880-1900
976.9295/MAR	no author	Marriage Record, 1852-1880
976.9295/TAL	Talley, William M.	Historical Vignettes and Trivia about Lewis County [Kentucky]
976.9295/TAL	Talley, William M.	Ancestor Hunting
976.9323/BOS	Boss, Lula Reed	Mason County, Kentucky, Court Records, Marriages
976.9485/YEN	Yenne, Betty J.	Mercer County, Kentucky Census Records 1789, 1800, 1820 and Tax List 1795
976.9495/ELL	Ellsberry, Elizabeth Prather	Marriage Records for Nelson County, Kentucky, 1785-

Call Number	Author	Title
		1815
976.9495/ING	Ingmire, Frances T.	Nelson County, Kentucky Marriage Records
976.9523/ELL	Ellsberry, Elizabeth Prather	Cemetery Records of Boyle County, Kentucky
976.993/GRA	no author	Graves County, Kentucky, History and Families
977.1113/KAL	Kalamazoo Valley Fam. News.	Williams County, Ohio, 1 City, 8 Villages and 12 Townships
977.1794/CLE	no author	Clermont County, Ohio Census, 1800, 1810, 1820
977.1796/BRO	no author	Brown County, Ohio Census, 1840
977.1845/McB	McBride, David N.	Marriage Records of Highland County, Ohio (1805-1880)
977.2255/RID	Ridlen, Colleen Alice	Monroe County, Indiana Early Marriage Records, 1818-1837
977.242/GRE	no author	Greene County, Indiana History, Biographical Sketches
977.278/KAL	Kalamazoo Valley Fam. News.	Steuben County, Indiana, 1 City, 6 Towns and 12 Townships
977.279/KAL	Kalamazoo Valley Fam. News.	LaGrange County, Indiana, 4 Towns and 11 Townships
977.281/KAL	Kalamazoo Valley Fam. News.	Elkhart County, Indiana, 3 Cities, 4 Towns and 16 Townships
977.411/KAL	Kalamazoo Valley Fam. News.	Berrien County, Michigan, 8 Cities, 9 Villages and 22 Townships
977.412/KAL	Kalamazoo Valley Fam. News.	Cass County, Michigan, 1 City, 4 Villages and 15 Townships
977.413/KAL	Kalamazoo Valley Fam. News.	Van Buren County, Michigan, 4 Cities, 7 Villages and 18 Townships
977.414/KAL	Kalamazoo Valley Fam. News.	Allegan County, Michigan, 4 Villages, 6 Cities, and 24 Townships
977.417/KAL	Kalamazoo Valley Fam. News.	Kalamazoo County, Michigan, 4 Cities, 5 Villages and 15 Townships
977.419/WIL	Williams, Bette	St. Joseph County, Michigan 1845 State Census
977.433/WIL	Williams, E. Gray	First Land Owners of Wayne County, Michigan
977.614/JOH	Johnson, Frederick L.	Uncertain Lives, African Americans and Their First 150 Years in the Red Wing, Minnesota Area
977.7/APP/4	Gorden, Willis G.	Biographical Records of Residents of Johns Township and Surrounding Areas [Appanoose and Wayne Counties, Iowa]
977.7/HARRISON	Hawkins, W. H.	Directory of Harrison County, Iowa, 1905
977.7/IDA/47	no author	St. Paul's Evangelical Lutheran Church, Holstein, Iowa, 1883-1983
977.7/LUCAS/59	Lucas Co. [Iowa] Gen. Society	Lucas County, Iowa Cemetery Records
977.7/MONONA/67	Swearingen, Boyd	Negro Cemetery, Jordan Township, Monona County, Iowa
977.7/MONROE/68	Kocur, Bob	Foster, Iowa and Kinser Valley and Monroe County, Iowa
977.7/POLK/77	Brown, Joyce E.	Caldwell Funeral Home, Des Moines, Polk County, Iowa, 1979
977.7/POLK/77	Brown, Joyce E.	Caldwell Funeral Home, Des Moines, Polk County,

Call Number	Author	Title
		Iowa, 1980
977.7/POLK/77	Brown, Joyce E.	Caldwell Funeral Home, Des Moines, Polk County, Iowa, 1981
977.7/POLK/77	Brown, Joyce E.	Caldwell Funeral Home, Des Moines, Polk County, Iowa, 1982
977.7/STORY/85	Reiter, Nancy	Shipley, Remember When
977.8/AND	Anders, Leslie	The Eighteenth Missouri
977.8/STA	Stanley, Lois	Missouri Marriages in the News, 1851-1865 [Volume I]
977.8/STA	Stanley, Lois	Missouri Marriages in the News, Volume II, January 1866-December 1870
977.8126/McM	McMackin, Dorothy J.	Newspaper Gleanings of Andrew County [Missouri] and Surrounding Area
977.8183/DAV	Daviess Co. Hist. Society	History of Daviess County, Missouri
977.8215/HIS	no author	History of Grundy County, Missouri
977.8223/ELL	Ellsberry, Elizabeth Prather	Birth Records of Livingston County, Missouri, 1883-1884, Vol. I
977.8223/ELL	Ellsberry, Elizabeth Prather	Birth Records of Livingston County, Missouri, Volume III
977.8223/ELL	Ellsberry, Elizabeth Prather	Marriage Records of Livingston County, Missouri, 1837-1868
977.8223/ELL	Ellsberry, Elizabeth Prather	Marriage Records of Livingston County, Missouri, Book 2, 1863-1880
977.8223/SEI	Seiberling, Ruth	Livingston County [Missouri] History, 1821-1981
977.8223/SEI	Seiberling, Ruth	Livingston County [Missouri] History, Sesquicentennial, 1837-1987
977.8225/ELL	Ellsberry, Elizabeth Prather	Cemetery Records of Northern Carroll County, Missouri, Vol. I
977.8225/ELL	Ellsberry, Elizabeth Prather	Carroll County, Missouri, Wills and Administrations, 1834-1879
977.8225/ELL	Ellsberry, Elizabeth Prather	Carroll County, Missouri Marriage Records, 1833-1856
977.8225/HIS	no author	History of Carroll County, Missouri [1881]
977.8225/TUR	Turner, S. K.	Twentieth Century History of Carroll County, Missouri, Volume I [1911]
977.8225/TUR	Turner, S. K.	Twentieth Century History of Carroll County, Missouri, Volume II [1911]
977.8235/CRU	Crumpacker, Gladys Wells	The Complete History of Sullivan County, Missouri, 1836-1900, Volume I
977.8235/CRU	Crumpacker, Gladys Wells	The Complete History of Sullivan County, Missouri, 1900-1979, Volume II
977.8235/DAU	D.A.R.	Cemetery Inscriptions of Sullivan County, Missouri, Volume IV
977.8235/ELL	Ellsberry, Elizabeth Prather	Will Records of Sullivan County, Missouri, 1849-1880
977.8235/ELL	Ellsberry, Elizabeth Prather	Sullivan County, Missouri Marriage Records, 1859-1880, Vol. II
977.824/BRO	no author	Browning, Missouri Centennial Celebration . . . Through the Years, 1872-1972
977.824/HIS	no author	History of Linn County, Missouri
977.8355/ELL	Ellsberry, Elizabeth Prather	Cemetery Records of Ralls County, Missouri, Volume I

Call Number	Author	Title
977.865/PIT/Q	Pitzman, Julius	Pitzman's New Atlas of the City and County of St. Louis, Missouri, 1878
977.865/SAI	St. Louis Genealogical Society	St. Louis and St. Louis County, Missouri Census, 1860 Index, Volume I: A-E
977.865/SAI	St. Louis Genealogical Society	St. Louis and St. Louis County, Missouri Census, 1860 Index, Volume II: F-K
977.865/SAI	St. Louis Genealogical Society	St. Louis and St. Louis County, Missouri Census, 1860 Index, Volume III: L-R
977.865/SAI	St. Louis Genealogical Society	St. Louis and St. Louis County, Missouri Census, 1860 Index, Volume IV: S-Z
977.865/SAI	St. Louis Genealogical Society	St. Louis and St. Louis County, Missouri Census of 1850, Index
977.866/GRI	Griffith, Dorothy Amburgey	StLGS [St. Louis Genealogical Society] Index of St. Louis Marriages, 1804-1876, Volume I
977.866/GRI	Griffith, Dorothy Amburgey	StLGS [St. Louis Genealogical Society] Index of St. Louis Marriages, 1804-1876, Volume II
977.867/GIF	Gifford, Florence	Jefferson County, Missouri Census, 1850
977.868/SAI	St. Louis Genealogical Society	Census of St. Francois County, Missouri, 1850
977.896/KEL	Keller, Quinton	Census of Cape Girardeau County, Missouri . . . One Thousand Eight Hundred and Seventy-Six
977.896/KEL	Keller, Quinton	Cape Girardeau County, Missouri Census, 1850
979.1/GRA	Granger, Byrd H.	Will C. Barnes' Arizona Place Names
979.493/ARM	Armstrong, Alice Catt	Who's Who in Los Angeles County [California], 1952-53

Iowa Genealogical Society Queries

Queries are free to members of IGS and \$5.00 per query for non-members. Queries will be published as space permits. We reserve the right to edit and/or reject material. Please **TYPE** or **PRINT** your query for clarity. Limit queries to **FIFTY WORDS**, if possible. Only **ONE** query per person per issue unless space permits.

Name Index

Anderson	Darby	16
Amelia	Cartwright	
John A.	Henry	16
Robert.....	Cassidy	
Scott.....	Francis	16
Backen	John	16
Julius	Castelo	
Baermann	John	16
John	Castigan	
Beck	Daniel	16
J M.....	Castle	
Benson	Joseph.....	16
S. R.	Moses	16
Birsinger	Cate	
Lisa	Charles	17
Blair	Lester.....	17
Morris W.....	Caulfield	
Boak	Thomas.....	17
Samantha K.....	Cavanaugh	
Boake	William.....	17
Samantha K.....	Chalstrom	
Bockelman	John	17
Emil	Chambers	
Boes	Edward	17
Louisa.....	Thomas.....	17
Bryson	Chandler	
Andrew	Henry	17
Andy.....	Chantler	
Burch	James	17
James H.....	Charelson	
Burton	Osmun	17
Jesse.....	Charlson	
Caims	Stone.....	17
James	Chatelain	
Robert.....	George Maxim Victor	17
William.....	Chelswig	
Callaghan	Engbregh	17
Owen	Christensen	
Callinson	Andrew	17
C.	Hans Christian	17
Calonge	Christenson	
Frank	James	17
Carlberg	Johann	17
Andrew.....	Christofferson	
Carless	Andrew	17
Charles	Christopherson	
Carlson	Michael.....	17
A. A.....	Chulstrom	
Andrew J.....	C	17
C A	Clancy	
Carl Emil.....	Michael.....	17
Charles J.....	Clark	
J A.....	John	18
J P.....	William.....	18
John	Claussen	
Swan.....	H R	5
Camey	Cleal	
Hugh	Charles	18
Carnnitzer		
Morris.....	Clegg	
Carr	William.....	18

Clelland		Robert.....	19
Thomas.....	18	Timothy.....	19
Cler		Crowly	
Melchior.....	18	Patrick.....	19
Clinton		Cummings	
Michael.....	18	William.....	19
Coffey		Cunnington	
Owen.....	18	Joseph.....	19
Coffin		Cushing	
L S.....	7	James H.....	19
Lorenzo S.....	7	Cuthbert	
Cohen		Alexander R.....	19
A L.....	18	Damm	
Abraham.....	18	George.....	4
B.....	18	George Diecke.....	4
Julius R.....	18	De Wild	
M.....	18	Jan.....	5
Solomon.....	18	Drummond	
Collard		Dolly L.....	5
William.....	18	Hannah.....	6
Collins		Thomas.....	5, 6
John.....	18	Forte	
Collinson		Jim.....	9
Andrew J.....	18	Fremont	
Connaly		John C.....	7
Andrew.....	18	Fumetti	
Connart		William.....	5
Isaac.....	18	Gamb	
Connelly		Otto.....	4
John.....	18	Pfarer (Minister) A.....	4
Connory		Geeseka	
Michael.....	18	Alveena.....	5
Conrad		Goenne	
Moritz.....	18	Bertha.....	4
Conradi		Ernst Christian.....	4
George.....	18	Mrs. Ernst C.....	4
Philip.....	18	Gönne	
Conroy		Johann F.....	4
Michael.....	19	Harthill	
Cook		W. P.....	6
Allen.....	19	Imholtz	
Cope		Joseph F.....	12
Walter John.....	19	Inman	
Corridan		Roy G.....	12
John.....	19	Inskip	
Cosgriff		Joseph.....	12
John.....	19	Irvine	
Costigan		Wm. Smith.....	12
David.....	19	Irwin	
Cote		John T.....	12
Charles.....	19	Isbell	
Cotter		Charles I.....	12
William.....	19	Iseberg	
Cottin		Ole.....	12
S.....	19	Ishmael	
Crolley		Geo W.....	12
John.....	19	Jackson	
Cronan		Douglas Velie.....	12
Timothy.....	19	Oliver P.....	12
Cross		Warren Anson.....	12
Joseph.....	19	William.....	12
Crowley		Jacobs	
C W.....	19	Art.....	12

Charles	12	John C G	14
S N.....	12	John E.....	14
Jacobson		John M.....	14
Carl C.....	13	John Thomas.....	14
Con A.....	12	Karl A.....	14
Edward.....	13	Neal.....	14
Harold.....	13	Peter J.....	14
Jaeggi		Theodore.....	14
Albert M.....	13	Ward Phillip.....	14
Jairl		William E.....	14
James.....	13	Wm L.....	14
James		Johnston	
Charles W.....	13	George D.....	14
Jessie T.....	13	Robert E.....	14
Morgan Newton.....	13	Jones	
Jamison		Dr. Charles W.....	14
Samuel M.....	13	Elmer B.....	14
Janda		Frank.....	14
Joseph F.....	13	Frank E.....	14
Jandera		Fred K.....	14
Bedrich O.....	13	Grant R.....	14
Janka		Jessie P.....	14
Joseph.....	13	John.....	14
Jappy		Kirby.....	14
Oscar W.....	13	Luther A.....	14
Jarboe		M Scott.....	14
James Lee.....	13	Owen H.....	14
Jarchow		Walter Thomas.....	14
Edward H.....	13	Joseph	
Jenkins		Chas.....	14
Harry David.....	13	Joy	
Jenks		Louis H.....	14
Charles F.....	13	Judd	
Guy P.....	13	Charles.....	14
Jensen		Jungk	
Carl.....	5	Carl J.....	14
Otto.....	13	Jurinec	
Jerde		Frank.....	14
Jacob N.....	13	Kimm	
Jewell		Anna.....	6
John E.....	13	Lincoln	
Jobe		Abraham.....	7
Harry.....	13	McGiffin	
Johnson		James Q.....	7
Amel G.....	13	Meyerhoff	
Andrew N.....	13	Charles.....	8
Axel.....	13	Chas.....	8
Benj B.....	13	Miller	
Charles A.....	13	James R.....	4
Chas G.....	13	Nelson	
Christian K.....	13	Rachel S.....	5
Elmer A.....	13	Rice	
Elza C.....	13	Dolly Lovern.....	6
Frank R.....	13	Riha	
Hans P.....	13	Joseph.....	5
Henry.....	13	Ruby	
Homer M.....	13	Esther.....	7
J A.....	13	John.....	7
James E.....	13	Rumsey	
Jens.....	13	Schuyler.....	9
Joab.....	13	Salter	
John.....	13	Rev Wm.....	8
John A.....	14	Siegel	
John B.....	14	Robert A.....	9

Terpstra		Dr.....	5
Mary	4	W.5	
Rein	4	Walter.....	5
Thompson		Van Meerten	
Mary	5	John	5
Trommershausen		Wright	
		Richard, Capt.....	20